

# Agriculture Geographic Information Systems Advanced Diploma Programs



**RUSS EDWARDS  
SCHOOL**  
Agriculture & Environment



**Assiniboine  
College**

# Welcome!

- Campus Location
- Overview of Programs
- Admission Requirements
- Program Specific-Information
- Student Supports
- How to Apply
- Q & A



**RUSS EDWARDS  
SCHOOL**  
Agriculture & Environment





# BRANDON VICTORIA AVENUE EAST CAMPUS



**RUSS EDWARDS  
SCHOOL**  
Agriculture & Environment



**Assiniboine  
College**

# Admission Requirements

- As an advanced diploma, students require a previous diploma or a degree from a recognized post-secondary institution
- A valid drivers license & access to a vehicle is strongly recommended given the potential need for travel to rural areas
- If English is not your first language, official proof of English language proficiency is required. See **[assiniboine.net/elp](http://assiniboine.net/elp)** for more information.



**RUSS EDWARDS  
SCHOOL**  
Agriculture & Environment





# Agriculture

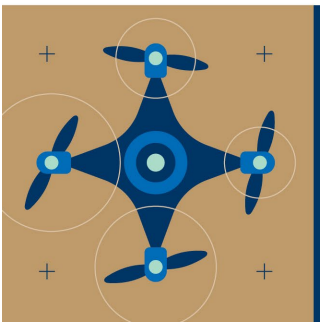


**RUSS EDWARDS  
SCHOOL**  
Agriculture & Environment



# Overview of Program

- 12-month Advanced Diploma program
  - 8-month program with a 4-month paid co-op work placement
- September intake
- Full-time program (Monday-Friday)
- Approximately 2 hours of homework per day
- Open to International students

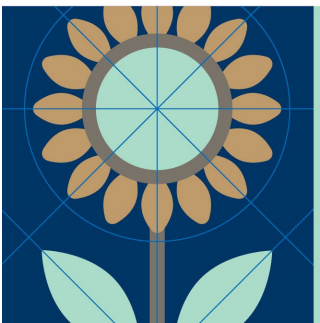


**RUSS EDWARDS  
SCHOOL**  
Agriculture & Environment



# Agriculture

- Designed for those looking to build on their existing education to prepare them for a career in the agriculture industry
- Program is compiled of select courses from the Agribusiness diploma program
- Provides a broad skill set that can be applied to managing a farm business or working within the agriculture sector
- Learn the basics of plants, soil, water, and technology
- Gain skills in agronomy, sales, and marketing of agricultural products

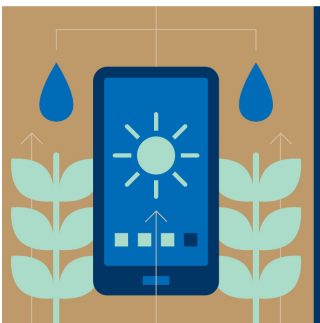


**RUSS EDWARDS  
SCHOOL**  
Agriculture & Environment



# Courses

- Agro-Ecology Field Laboratory
- Agricultural Equipment
- Commodity Marketing
- Communications
- Crop Pest Management
- Crop Production Systems
- Environmental Land Management
- Integrated Crop Management
- Livestock Production
- Occupational Health and Safety
- Pesticides in Agriculture
- Soil and Soil Fertility
- Co-op Work Placement



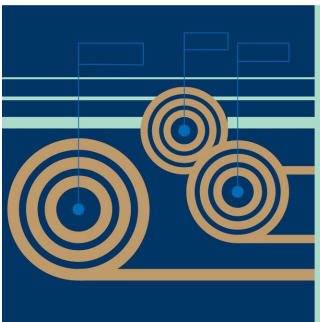
**RUSS EDWARDS  
SCHOOL**  
Agriculture & Environment





# Student Experience

- Students have a variety of classroom and computer based learning, tours, guest speakers, workshops, and conferences
- Indoor and outdoor learning
- Plant and soils lab
- Field-based courses
- Safety is always top of mind

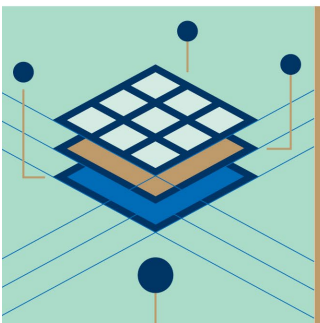


**RUSS EDWARDS  
SCHOOL**  
Agriculture & Environment



# Students in the Program

- Adaptability in a dynamic business environment
- Critical thinking and problem-solving skills
- An interest in communication, marketing and sales
- Look forward to a career that allows for a lot of interaction with people on and off the farm

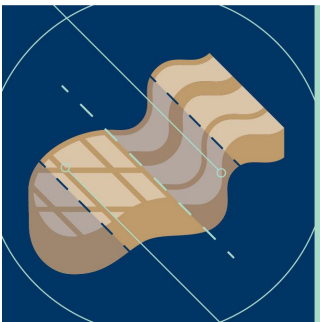


**RUSS EDWARDS  
SCHOOL**  
Agriculture & Environment



# Overview of Employment

- The job market is expanding in the prairies
- Positions offer competitive salaries and opportunity for advancement
- Both rural and urban job opportunities available
- Professional designations offer greater career mobility within the industry, as well as internationally
- Paid co-op industry-related work placement



**RUSS EDWARDS  
SCHOOL**  
Agriculture & Environment

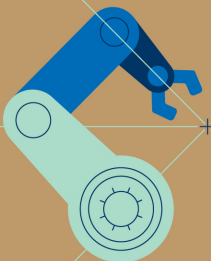
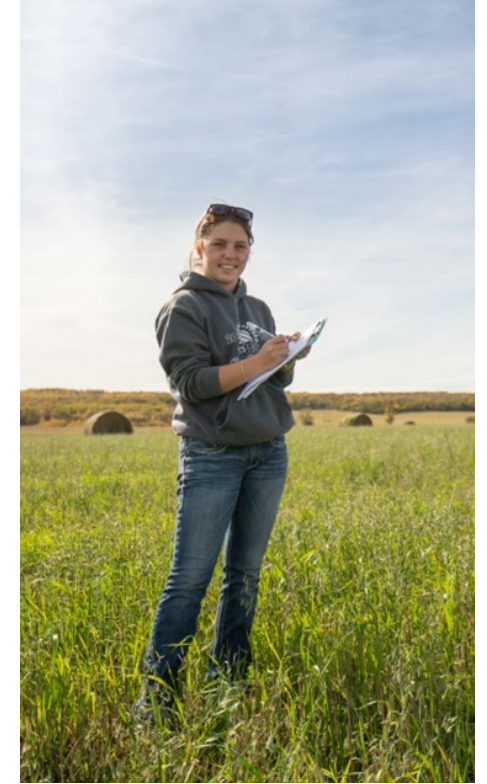




# Overview of Employment

**Work in a variety of areas including:**

- Grain companies
- Crop Protection
- Agronomy
- Research
- Seed and fertilizer providers
- Livestock supply outlets
- Agricultural equipment dealers
- Government agencies
- Co-operatives
- Banks and credit unions

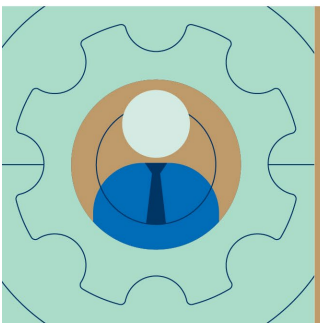


**RUSS EDWARDS  
SCHOOL**  
Agriculture & Environment



# What Makes this Programs Unique?

- Variety of opportunities for students to participate in industry events and network with industry professionals
- Constantly updating content to include the most relevant technology and information
- Faculty support in career development is key
- Small class sizes = more one-on-one attention with instructors and equipment
- Paid four-month co-op work placement



**RUSS EDWARDS  
SCHOOL**  
Agriculture & Environment



# Post-Graduation

Assiniboine's Agriculture program can lead to professional studies and certification:

- Eligible for membership in Agrologists Manitoba
- Can complete certifications for Pesticide Applicators / Dispenser licensing (can be completed at Assiniboine)
- Prepare for the Certified Crop Advisor (CCA) exams to become a CCA in Training



**RUSS EDWARDS  
SCHOOL**  
Agriculture & Environment





# Geographic Information Systems (GIS)



**RUSS EDWARDS  
SCHOOL**  
Agriculture & Environment



# Overview of Program

- 8-month Advanced Diploma program
- September intake
- Full-time program (Monday-Friday)
- Approximately 2 hours of homework per day
- Open to International students



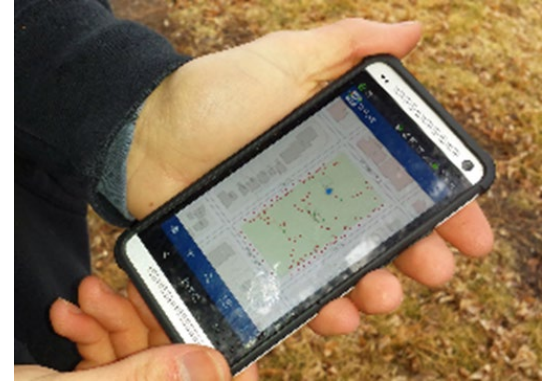
**RUSS EDWARDS  
SCHOOL**  
Agriculture & Environment



**Assiniboine  
College**

# Geographic Information Systems

- Complete analysis using real data and partnerships with organizations using GIS
- Expand the horizon with mobile data collection, managing data in the cloud and web based mapping
- Complete a variety of tasks from web & GIS-based programming
- Collect, manage & maintain data to create, integrate, compile and complete spatial analysis
- Share data, maps and reports while instructing others in the use of GIS in a variety of industry settings



**RUSS EDWARDS  
SCHOOL**  
Agriculture & Environment





# Student Experience

- Computer skills are essential
- Use industry standard software
- Experience field-based data collection with top-end equipment
- Many courses allow you to tailor your studies and projects to your field of interest



**RUSS EDWARDS  
SCHOOL**  
Agriculture & Environment

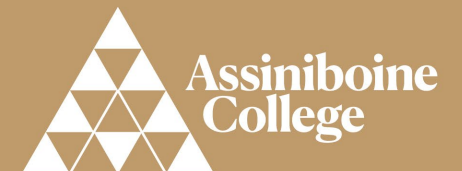


# Students in the Program

- Well-rounded, tech-savvy individuals with a wide range of skills
- Multi-tasking, multi-disciplinary and fast-on-their-feet
- Comfortable with writing, math and statistics in order to prepare reports, perform research and give a professional opinion
- Critical thinking and problem-solving skills
- Initiative, agility and adaptability
- Curious and creative



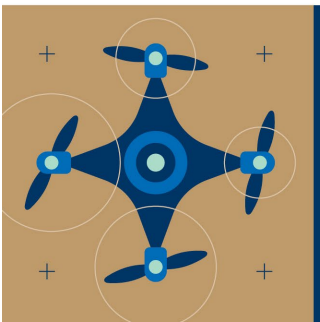
**RUSS EDWARDS  
SCHOOL**  
Agriculture & Environment



# Overview of Employment

**Typical job duties in the GIS field may include:**

- Use computer programs and software packages to prepare graphic reports, maps, and charts
- Analyze data sets for daily decision-making procedures
- Create, develop, and maintain databases
- Use maps and data sets for spatial analysis
- Develop computer software regimes to customize geographical information



**RUSS EDWARDS  
SCHOOL**  
Agriculture & Environment

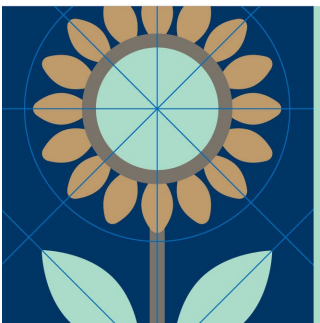




# Overview of Employment

**Work in a variety of areas including:**

- Surveying
- Remote sensing
- GIS
- Cartography
- Photogrammetry
- Government (all levels)
- Utilities
- Mapping
- Software & App Development
- Agriculture
- Forestry
- Criminology
- Architecture
- Engineering



**RUSS EDWARDS  
SCHOOL**  
Agriculture & Environment



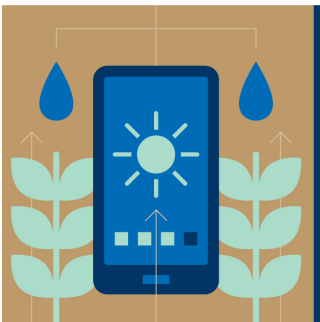
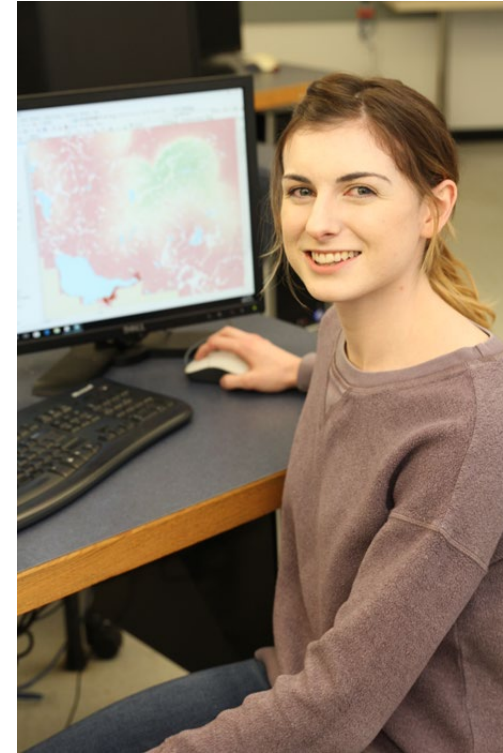
# Overview of Employment

## Local Employers may include:

- Manitoba Habitat Heritage Corporation
- Nature Conservancy of Canada
- Ducks Unlimited
- City of Brandon
- Farmers Edge
- Manitoba Municipal Relations / Land Use

## Planning & Development

- 911 / Medical Transport Centre
- Manitoba Watershed Districts

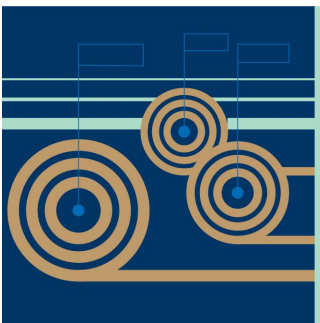


**RUSS EDWARDS  
SCHOOL**  
Agriculture & Environment



# What Makes the Program Unique?

- Learn from instructors with over 30 years of combined GIS experience
- Up-to-date computer hardware, software & equipment
- Real data, real projects, unique opportunities
- Small class sizes = more one-on-one attention with instructors and equipment



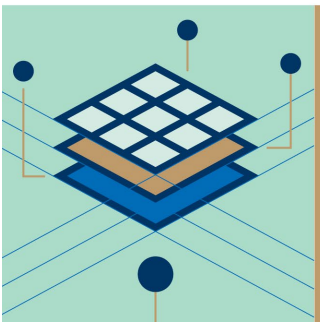
**RUSS EDWARDS  
SCHOOL**  
Agriculture & Environment



# Post-Graduation

Assiniboine's GIS program can lead to professional certifications/designations;

- **GISP** (GIS Professional) through the GIS Certification Institute
- **CGS** (Certified Geomatics Specialist) available from the Canadian Institute of Geomatics
- **Technical Certification** with ESRI (GIS Software Developer) which recognize expertise in three domains: desktop, developer and enterprise, at three levels: Entry, Associate and Professional



**RUSS EDWARDS  
SCHOOL**  
Agriculture & Environment





# STUDENT SUPPORTS

## **Advice & Resources**

- Student Success Advisors

## **Financial Advising**

- Financial aid, scholarships, bursaries, etc.

## **Support & Accommodations**

- Accessibility and disability services

## **Academic Support**

- Learning curve
- Library

## **Getting Settled**

- Housing, parking, childcare, etc.



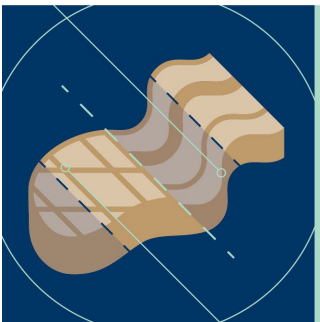
# UP TO **\$100,000** IN FULL-TUITION AWARDS AVAILABLE

The Elevate Award is dedicated to supporting university or college graduates looking to enhance their professional skill sets.

Assiniboine has the following advanced diploma programs to choose from:

- » Agriculture
- » Accounting
- » Accounting with Co-op
- » Finance
- » Finance with Co-op
- » Geographic Information Systems (GIS)
- » Human Resource Management
- » Marketing
- » Public Safety
- » Sustainable Food Systems

[assiniboine.net/elevate](https://assiniboine.net/elevate)



**RUSS EDWARDS  
SCHOOL**  
Agriculture & Environment



## STEP 1: CHOOSE YOUR PROGRAM

- Research our programs and admission requirements at **[assiniboine.net/programs](https://assiniboine.net/programs)**. If you are unsure if you meet admission requirements, contact **[admissions@assiniboine.net](mailto:admissions@assiniboine.net)** before you apply.
- Still not sure which program to take? Contact our recruitment team at **[recruit@assiniboine.net](mailto:recruit@assiniboine.net)** or call **204.725.8750** or toll free **1.800.862.6307** ext. **8750**.



**RUSS EDWARDS  
SCHOOL**  
Agriculture & Environment



## STEP 2: APPLY TO YOUR PROGRAM

- Visit **assiniboine.net/apply** to get started. For most programs at Assiniboine (those that are not competitive entry), qualified applicants are admitted on a first-completed, first-served basis. We accept applications up to one year prior to the program start date.
- You will need the following (at minimum) to apply:
  1. Application form – NEW apply online!
  2. \$95 application fee
  3. Official transcripts
  4. Certain programs, such as our competitive entry programs, require additional documentation. Check out the admission requirements on your program's webpage for full details.



**RUSS EDWARDS  
SCHOOL**  
Agriculture & Environment





## STEP 3: BECOME A STUDENT

- We will connect with you when we receive your application. Applications are complete when all documentation is submitted.
- If you meet admission requirements, and there is space in the program, you will be sent an acceptance letter.
- Your non-refundable tuition deposit is due before the stated deadline.
- If you have applied to a competitive entry program, your application will be assessed and successful applicants will be accepted.



**RUSS EDWARDS  
SCHOOL**  
Agriculture & Environment



# INFO SESSIONS

- [assiniboine.net/infosession](http://assiniboine.net/infosession)



**RUSS EDWARDS  
SCHOOL**  
Agriculture & Environment



**Assiniboine  
College**





# EXPERIENCE Assiniboine

**DISCOVER ASSINIBOINE  
WITH THIS ONE-STOP SHOP!**

- ✓ Take our online career quiz and find a program that best fits you.
- ✓ Connect with a Recruiter



[assiniboine.net/experienceassiniboine](https://assiniboine.net/experienceassiniboine)

# CONNECT WITH US

## WEBSITE

[assiniboine.net/connect](http://assiniboine.net/connect)

## EMAIL

[recruit@assiniboine.net](mailto:recruit@assiniboine.net)

## PHONE

204.725.8750

1.800.862.6307 ext. 8750 (toll-free)



**RUSS EDWARDS  
SCHOOL**  
Agriculture & Environment



**Assiniboine  
College**