

Agribusiness & Land and Water Management



**RUSS EDWARDS
SCHOOL**
Agriculture & Environment



Welcome!

- Campus Location
- Overview of Programs
- Student Experience
- Students in the Programs
- Program Outcomes
- What Makes These Programs Unique
- Admission Requirements
- Program-Specific Information
- Student Supports
- How to Apply
- Q & A



BRANDON VICTORIA AVENUE EAST CAMPUS



**RUSS EDWARDS
SCHOOL**
Agriculture & Environment



**Assiniboine
College**

Overview of Programs

- Two-year diplomas
- September intakes
- Students have a variety of field based courses, classroom and computer based learning, guest speakers, workshops, and conferences
- Full-time programs (Monday-Friday)
- Approximately 2 hours of homework per day
- Open to International students

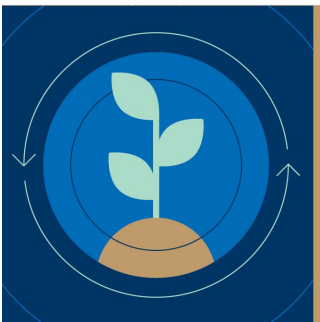


**RUSS EDWARDS
SCHOOL**
Agriculture & Environment



Student Experience

- Focus on hands-on learning; this applies in the field and in the classroom
- Students learn the basics of plants, soil, water, and technology
- Safety is always top of mind
- Co-op Work Placements between Year 1 and 2

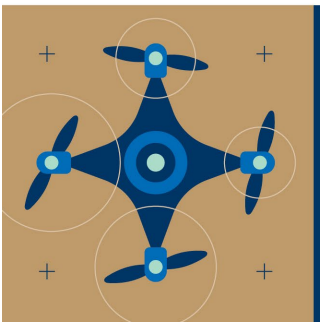


**RUSS EDWARDS
SCHOOL**
Agriculture & Environment



Students in the Programs

- Have a strong interest in natural resources, environmental sciences, and agriculture
- Adaptability in a dynamic business environment
- Critical thinking and problem-solving skills
- An interest in communication, marketing and sales
- Look forward to a career that allows for a lot of interaction with people and the outdoors

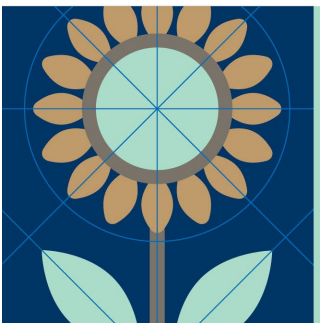


**RUSS EDWARDS
SCHOOL**
Agriculture & Environment



Program Outcomes

- Provide a broad skill set that can be applied to ecosystem management and working within the natural resources sector or managing a farm business and working within the agriculture sector
- Solve real-world problems focused on water, land, and environmental management issues

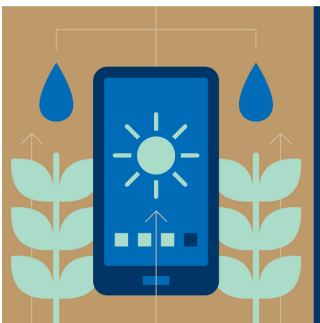


**RUSS EDWARDS
SCHOOL**
Agriculture & Environment



What Makes these Programs Unique?

- Variety of opportunities for students to participate in industry events and network with industry professionals
- Constantly updating content to include the most relevant technology and information
- Faculty support in career development is key
- Small class sizes = more one-one-attention with instructors and equipment

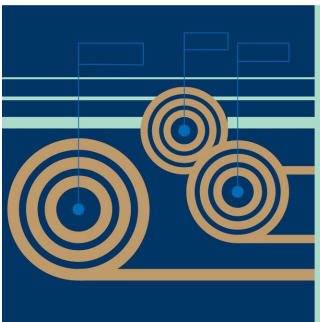


**RUSS EDWARDS
SCHOOL**
Agriculture & Environment



Overview of Employment

- The job market is expanding in the prairies
- Our graduates are high in-demand
- Entry level positions offer competitive salaries and opportunity for advancement
- Both rural and urban job opportunities available



**RUSS EDWARDS
SCHOOL**
Agriculture & Environment



Admission Requirements

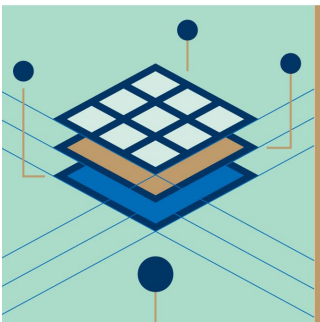
Land & Water Management:

- Grade 12 diploma, including:
 - English 40G/40S or equivalent
 - Applied Math or Pre-Calculus 40S or equivalent

Biology 40S and Chemistry 40S or equivalents are not required, but **strongly recommended**

Agribusiness:

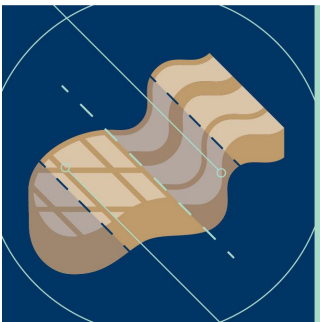
- Grade 12 diploma, including:
 - English 40G/40S or equivalent
 - Consumer/Essential Math 40S
- A valid drivers license & access to a vehicle is **strongly recommended** given the potential need for travel to rural areas
- If English is not your first language, official proof of English language proficiency is required. [See \[assiniboine.net/elp\]\(http://assiniboine.net/elp\)](http://assiniboine.net/elp) for more information.



**RUSS EDWARDS
SCHOOL**
Agriculture & Environment



Agribusiness

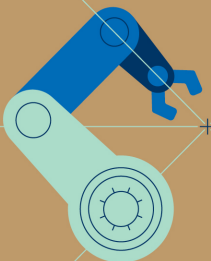


**RUSS EDWARDS
SCHOOL**
Agriculture & Environment



Agribusiness

- First year courses are focused on agronomy and sales
- Second year is focused on advanced agronomy and management skills training which is applied to a Business Plan project
- Develop skills in agronomy, GIS/GPS and other computer applications, livestock production, sales and marketing of agricultural products.

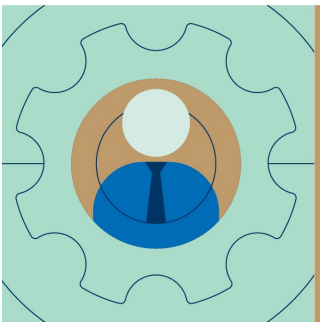


**RUSS EDWARDS
SCHOOL**
Agriculture & Environment



Courses – Year One

- Agribusiness Math
- Agro-Ecology Field Laboratory
- Communications and Technology
- Crop Pest Management
- Crop Production Systems
- Financial Accounting 1
- Occupational Health and Safety
- Pesticides in Agriculture
- Professional Development
- Soil and Soil Fertility



**RUSS EDWARDS
SCHOOL**
Agriculture & Environment



Courses – Year Two

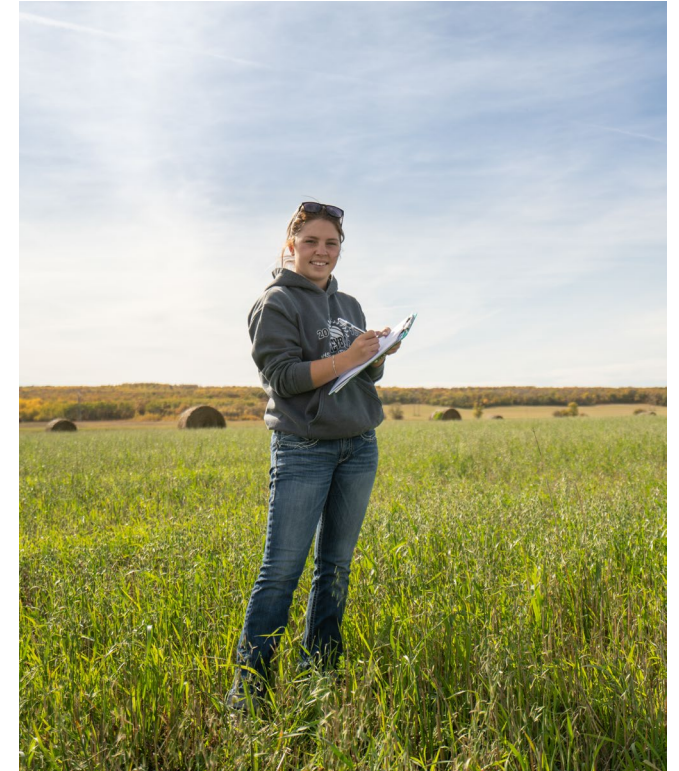
- Agribusiness Management
- Agribusiness Marketing
- Agribusiness Plan
- Agricultural Equipment
- Commodity Marketing
- Customer Relations
- Environmental Land Management
- Integrated Crop Management
- Livestock Production
- Precision Agriculture



Overview of Employment

Work in a variety of areas including:

- Grain companies
- Crop Protection
- Agronomy
- Research
- Seed and fertilizer providers
- Livestock supply outlets
- Agricultural equipment dealers
- Government agencies
- Co-operatives
- Banks and credit unions



**RUSS EDWARDS
SCHOOL**
Agriculture & Environment



Overview of Employment

Potential Co-op Partners / Local Employers may include:

- Cargill Ltd
- Viterra
- Redferns
- Co-op
- RBC
- Manitoba Agricultural Services Corporation
- Shur-Gro
- Pioneer Grain



**RUSS EDWARDS
SCHOOL**
Agriculture & Environment



Future Study Options

University degree options (block transfers)

- Royal Roads University
- University of Manitoba
- University of Minnesota (Crookston)

Professional studies and certification

- Eligible for membership in Agrologists Manitoba
- Can complete certifications for Pesticide Applicators / Dispenser licensing
- Prepare for the Certified Crop Advisor (CCA) exams to become a CCA in Training



**RUSS EDWARDS
SCHOOL**
Agriculture & Environment



Land & Water Management

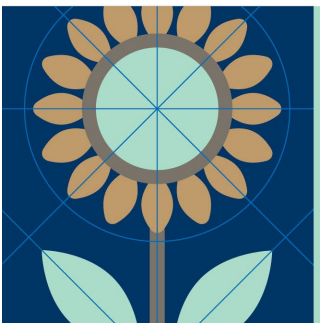


**RUSS EDWARDS
SCHOOL**
Agriculture & Environment



Land and Water Management

- First year courses are focused on natural resource management
- Second year is focused on advanced ecosystem management, which is applied to an Environmental Capstone project
- Develop skills in natural resources and environmental sciences, project management, global positioning systems (GPS), and GIS technologies

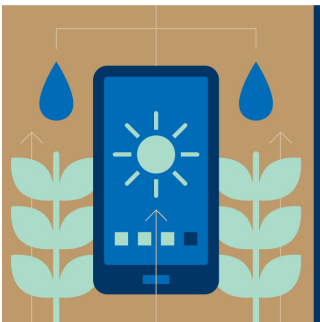


**RUSS EDWARDS
SCHOOL**
Agriculture & Environment



Courses – Year One

- Agro-Ecology Field Laboratory
- Aquatic Ecosystems
- Communications and Technology
- GIS Applications
- Natural Resource Technology
- Plant Physiology and Taxonomy
- Professional Development
- Soils and Water
- Statistics for Life Sciences
- Terrestrial Ecosystems

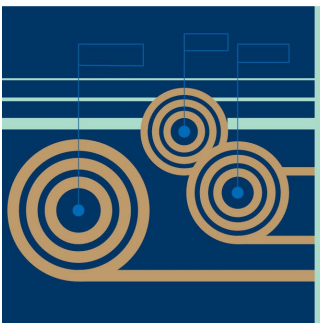


**RUSS EDWARDS
SCHOOL**
Agriculture & Environment



Courses – Year Two

- Ecology
- Environmental Capstone 1 & 2
- Environmental Chemistry
- Environmental Legislation
- Environmental Topics
- Fisheries / Wildlife Management
- Natural Resources Field Lab
- Reclamation and Remediation
- Socio-Environmental Management



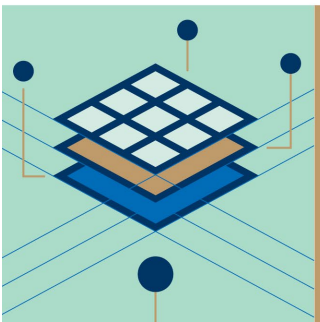
**RUSS EDWARDS
SCHOOL**
Agriculture & Environment



Overview of Employment

Work in a variety of areas including:

- Compliance (i.e. Conservation Officers)
- Land Use Planning
- Water Quality and Quantity Management
- Environmental Consulting
- Wildlife Management
- Environmental Health and Safety
- Not-for-Profit



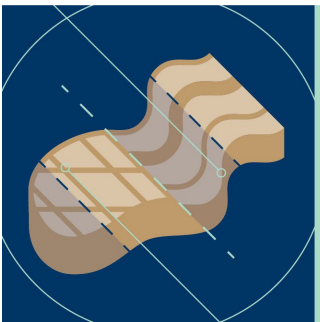
**RUSS EDWARDS
SCHOOL**
Agriculture & Environment



Overview of Employment

Potential Co-op Partners / Local Employers may include:

- Manitoba Habitat Heritage Corporation
- Nature Conservancy of Canada
- Parks Canada
- Ducks Unlimited
- Manitoba Watershed Districts
- Brandon Research Station

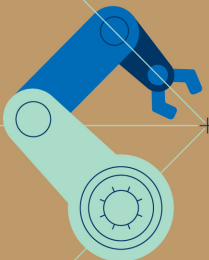


**RUSS EDWARDS
SCHOOL**
Agriculture & Environment



Future Study Options

- University degree and advanced diploma options
 - Geographic Information Systems at Assiniboine (8-month advanced diploma)
 - Bachelor of Technology (2 + 2 with NAIT)
 - Bachelor of Environmental Science (2 + 2 with BU – see BU website)
 - Bachelor of Arts or Science, Major in Geography (2 + 2 with BU – see BU website)
 - Bachelor of Applied Science: Environmental Management (block transfer agreement with Lakeland College)
- Professional studies and certification
 - Eligible for membership in Agrologists Manitoba
 - Professional designation through EcoCanada to become an Environmental Professional in-training (EPt)



**RUSS EDWARDS
SCHOOL**
Agriculture & Environment



STUDENT SUPPORTS

Advice & Resources

- Student Success Advisors

Financial Advising

- Financial aid, scholarships, bursaries, etc.

Support & Accommodations

- Accessibility and disability services

Academic Support

- Learning curve
- Library

Getting Settled

- Housing, parking, childcare, etc.



**RUSS EDWARDS
SCHOOL**
Agriculture & Environment



STEP 1: CHOOSE YOUR PROGRAM

- Research our programs and admission requirements at **assiniboine.net/programs**. If you are unsure if you meet admission requirements, contact **admissions@assiniboine.net** before you apply.
- Still not sure which program to take? Contact our recruitment team at **recruit@assiniboine.net** or call **204.725.8750** or toll free **1.800.862.6307** ext. **8750**.



**RUSS EDWARDS
SCHOOL**
Agriculture & Environment



STEP 2: APPLY TO YOUR PROGRAM

- Visit **assiniboine.net/apply** to get started. For most programs at Assiniboine (those that are not competitive entry), qualified applicants are admitted on a first-completed, first-served basis. We accept applications up to one year prior to the program start date.
- You will need the following (at minimum) to apply:
 1. Application form – NEW apply online!
 2. \$95 application fee
 3. Official transcripts
 4. Certain programs, such as our competitive entry programs, require additional documentation. Check out the admission requirements on your program's webpage for full details.



**RUSS EDWARDS
SCHOOL**
Agriculture & Environment



STEP 3: BECOME A STUDENT

- We will connect with you when we receive your application. Applications are complete when all documentation is submitted.
- If you meet admission requirements, and there is space in the program, you will be sent an acceptance letter.
- Your non-refundable tuition deposit is due before the stated deadline.
- If you have applied to a competitive entry program, your application will be assessed and successful applicants will be accepted.



**RUSS EDWARDS
SCHOOL**
Agriculture & Environment



**Assiniboine
College**

INFO SESSIONS

- assiniboine.net/infosession



**RUSS EDWARDS
SCHOOL**
Agriculture & Environment



**Assiniboine
College**



EXPERIENCE Assiniboine

**DISCOVER ASSINIBOINE
WITH THIS ONE-STOP SHOP!**

- ✔ Take our online career quiz and find a program that best fits you.
- ✔ Connect with a Recruiter



assiniboine.net/experienceassiniboine

CONNECT WITH US

WEBSITE

assiniboine.net/connect

EMAIL

recruit@assiniboine.net

PHONE

204.725.8750

1.800.862.6307 ext. 8750 (toll-free)



**RUSS EDWARDS
SCHOOL**
Agriculture & Environment

