



Prairie Innovation Centre (PIC)

November 27, 2024



Agenda

Prairie Innovation Centre project

Programs

Research

Design

Timeline

Prairie Innovation Centre

What is it?

- A facility that brings together post-secondary programming, applied research and industry partners to train, collaborate and solve problems through applied research
- Expand Assiniboine's history as Manitoba's Ag College
- Further develop our 1st Street North Campus

Fall 2024



PRAIRIE INNOVATION CENTRE

FOR SUSTAINABLE AGRICULTURE

Supporting Canada's Green Economic Recovery

- Agriculture contributes 62,000 jobs to Manitoba economy
- 1 in 3 Agriculture jobs to go unfilled by 2029
- \$725 million will be lost GDP to the Province
- 1.5 billion in private investment in the sector since 2016

**Assiniboine's
Contribution**

To grow from fewer than 300 students
in agriculture, environment and related
technology programs to over 800 students.

 AG
BELONGS
HERE

 **RUSS EDWARDS
SCHOOL**
Agriculture & Environment

- In-Demand Careers
- “State of the Art” learning facility
- Opportunity to work with leading researchers as part of curriculum
- Connecting with industry through collaboration area



The Prairie Innovation Centre is an integrated learning environment with a mixture of collaborative learning spaces, labs, multipurpose spaces and amenities.

PROGRAMS

Existing Programs

- Agribusiness
- Land and Water Management
- Geographic Information Systems
- Civil Technology (year 1)
- Communications Engineering Technology
- Horticultural Production
- Sustainable Food Systems
- Food Processing - Animal Proteins

New Programs

- Chemical Engineering Technology
- Food Science Technology
- Mechatronics Engineering Technology (Robotics and Automation)
- Civil Technology (years 2 and 3)
- Indigenous Resource Management
- Agriculture Advanced Diploma
- Bachelor of Commerce in Agribusiness
- Conservation Officer

Received funding for Mechatronics Engineering Technology (Robotics and Automation), with the first intake set to begin in fall 2025.

In conjunction with industry, we have partnered with Protein Industries Canada and Roquette and subsequently received \$500K to support the development of two programs: Food Science Technology and Chemical Engineering Technology.

Received funding for Mechatronics Engineering Technology (Robotics and Automation), with the first intake set to begin in fall 2025.

In conjunction with industry, we have partnered with Protein Industries Canada and Roquette and subsequently received \$500K to support the development of two programs: Food Science Technology and Chemical Engineering Technology.

APPLIED RESEARCH AND COLLABORATION

- Partner-driven collaboration responding to sector challenges and industry need, providing space and support to industry partners.
- Extension is an important part of applied research, where sharing the results with industry to have evidence-based information and technology passed to growers, processors, and other stakeholders.







MAIN ENTRANCE

Prairie Innovation Centre: Finishes & Materials Presentation



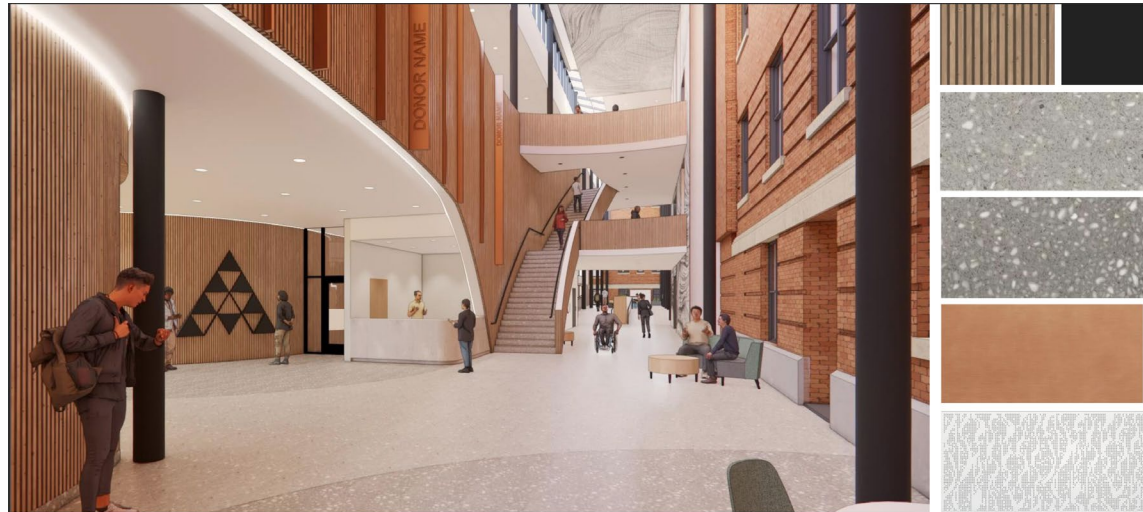


EAST ENTRY & PEDESTRIAN SPINE
Prairie Innovation Centre: Finishes & Materials Presentation



MAIN ENTRY PLAZA
Prairie Innovation Centre: Finishes & Materials Presentation



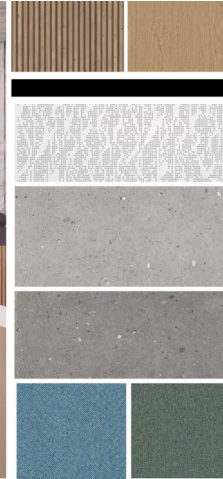


LEVEL 100 ATRIUM & AUDITORIUM
Prairie Innovation Centre: Finishes & Materials Presentation



LEVEL 100 AUDITORIUM
Prairie Innovation Centre: Finishes & Materials Presentation





LEVEL 300 STUDENT DINING & FOOD SERVICES
Prairie Innovation Centre: Finishes & Materials Presentation



LEVEL 300 MULTI-PURPOSE ROOM
Prairie Innovation Centre: Finishes & Materials Presentation





Thank you!