



ASSINIBOINE
COMMUNITY COLLEGE

MANITOBA, CANADA

2022-23 VIEWBOOK

ASSINIBOINE COMMUNITY COLLEGE

ASSINIBOINE ADVANTAGE

Our most recent grads say it all:



92%
HAVE JOBS



82%
HAVE A CAREER
RELATED
TO THEIR STUDIES



\$46k
AVERAGE FIRST-YEAR
SALARY



89%
STAY IN
MANITOBA

**Statistics taken from Assiniboine Community College's 2020 Graduate Satisfaction & Employment Survey*



TABLE OF CONTENTS

- | | | |
|--|--|---|
| 2. Assiniboine Advantage | 13. Financial Aid & Awards | 28. Business & Office |
| 3. Table of Contents | 14. Cougar Athletics | 30. Food & Hospitality |
| 4. Why Assiniboine? | 15. Campus Life: Students' Association | 31. Health |
| 6. Victoria Avenue East Campus | 16. Indigenous Student Supports | 32. Human Services |
| 7. North Hill Campus | 18. Adult Learning & Upgrading
Assiniboine International | 34. Technology |
| 8. Parkland Campus | 19. Continuing Studies
English as a Second Language (ESL) | 36. Trades |
| 9. Winnipeg Campus
Community-Based Training &
Rural Rotating Sites | 20. Saskatchewan Admission Requirements | 38. Program Fees |
| 10. Student Supports | 22. Manitoba Admission Requirements | 40. Distance Education & Apprenticeship |
| 11. Learning Curve | 24. Ontario Admission Requirements | 41. Experience ACC |
| 12. Student Resources | 26. Agriculture & Environment | 42. How to Apply |
| | | 43. Contact Us |



WHY ASSINIBOINE?

LEARN BY ACTUALLY DOING.

At Assiniboine, we immerse you in authentic situations and encourage you to spend more time away from the textbooks. Our college knows real-world skills and experiences are important. That's why our programs connect you with industries and communities through projects, conferences, cooperative work placements and practicums. All of this prepares you for a meaningful and interesting career.

BE PART OF A COMMUNITY.

Yes, we have small class sizes. Yes, your instructor knows your name. Yes, you can get to your classes in under five minutes and still have time for a refuel of caffeine. But more importantly, you'll make friendships that last a lifetime, learn from industry experts who can't wait to share everything they know with you, and study in an intimate setting that gives you the right tools for future success.

FLEXIBLE EDUCATION THAT FITS YOU.

Everyone has different goals and timelines, and we all come from different backgrounds. No two of us are the same, and at Assiniboine you choose the program and its delivery method that fits you best. Whether you want to study full or part-time, by distance or in-class, in an urban centre or in your community, Assiniboine's certificates, diplomas and advanced diplomas are offered through a variety of approaches.

TAKE US FOR A TEST DRIVE.

Thinking about studying at Assiniboine? Reach out to our recruitment team and further explore your program of interest and the college. Whether it's attending an information session or having a chat with one of our friendly staff, we'll be able to guide you, answer your questions and help prepare you for a rewarding college career!

ON CAMPUS

Assiniboine
Community
College

VICTORIA AVENUE EAST CAMPUS BRANDON

The Victoria Avenue East campus in Brandon features large classrooms and well-equipped labs, along with our largest library, a campus bookstore, gymnasium, early learning centre, lecture theatre, television studio, full-service cafeteria, lounge areas, fitness centre and games room. It's also home to our college radio station, CJ-106 FM and our Centre for Adult Learning .

There are hundreds of computers available to students after classes, with 46 stations available during campus hours. Our cultural centre provides a welcoming environment for Indigenous students and hosts many regular events throughout the year, including Elder visits, guest speakers, Bannock Wednesdays, movie nights and craft sessions.

Our state-of-the-art labs, like the networking, soils or HOLO simulation labs, will provide you with modern, interactive equipment and space to practice and hone your skill set to perfection.

Many of our evening and weekend courses through Continuing Studies at Assiniboine are also held at this campus. From gaining additional certification or trying your hand at a new hobby, our Continuing Studies programs and courses give you the most study flexibility.

assiniboine.net/victoria

These events provide practical, hands-on opportunities for Culinary Arts and Hotel and Restaurant Management students to test their skills and gain confidence in their field of study alongside skilled faculty members.

NORTH HILL CAMPUS BRANDON

Our North Hill campus is one of the most scenic places in the city. Perched on Brandon's North Hill, you'll have a stunning view overlooking the city and the Assiniboine River valley below.

We continue to expand at this historic location, and the North Hill campus now welcomes about half of our Brandon-based students. The site boasts the Manitoba Institute of Culinary Arts (MICA), housed inside a beautiful heritage building, combining the best of both new and old for students in Hotel and Restaurant Management and Culinary Arts with restored dining areas and study rooms, a contemporary teaching kitchen and a culinary theatre.

The spacious Len Evans Centre for Trades and Technology features modern machine shops and classrooms in a historically rich setting. Taking a trade? You'll enjoy the integrated, open-concept building with study areas, a Learning Hub, small library, cultural centre and cafeteria.

Nearby, our Sustainable Greenhouse is where you'll bloom in the Horticultural Production and Sustainable Food Systems programs. The large, modern greenhouse is a central spot for applied research centered on food security and sustainability under our Field to Fork approach.

assiniboine.net/nhcampus

MICA EVENTS

Some of the tastiest 'learn by doing' experiences at Assiniboine come from the annual student-run events at the Manitoba Institute of Culinary Arts (MICA).

These events provide practical, hands-on opportunities for Culinary Arts and Hotel and Restaurant Management students to test their skills and gain confidence in their field of study alongside skilled faculty members.





PARKLAND CAMPUS
DAUPHIN

Ideally placed in a central location, our Parkland campus serves communities across the region. We welcome full and part-time students to this vibrant campus that features a contemporary trades shop, health care training lab, enhanced student lounge and early learning centre.

Support services include two computer labs, a Learning Curve, and an on-site, full-time learning strategist. Meet with the advisor before or during your studies to discuss childcare, funding, housing and anything else you may need.

We've partnered with Parkland Crossing so there are more housing options for students.

Along with our full-time day programs, Continuing Studies at Assiniboine hosts general interest and career development courses. Other programs can be delivered as needed to meet specific needs through contracts with community agencies.

assiniboine.net/parkland

OFFICE PROGRAMS

Parkland campus offers three rotating office programs (intakes are every second year; the next intake is September 2023).

Office Skills is an eight-month certificate that provides knowledge in accounting, mathematics and communications. Graduates will be ready for entry-level administrative positions.

Office Management is a two-year diploma that provides students with advanced training in office procedures, including managerial and leadership skills.

Medical Administration is a two-year diploma that combines administrative training with an understanding of the Canadian health care system. Students will become comfortable with medical office procedures and develop a solid understanding of transcription, pharmacology and diagnostic imagery.

BUSINESS ADMINISTRATION

Business Administration is a two-year diploma program with either an accounting or human resource management specialization. The program starts in September, every other year, and students who wish to pursue a specialization not offered at Parkland campus are eligible to transfer to the Victoria Avenue East campus in Brandon for their second year.

COMPREHENSIVE HEALTH CARE AIDE

Comprehensive Health Care Aide is a six-month certificate program starting in February. Students gain valuable experience during their two practicum placements.

EARLY CHILDHOOD EDUCATION

Early Childhood Education is a two-year diploma program that prepares graduates for a rewarding career promoting the development of young children. This program runs every other September, with the next intake beginning in September 2022.

PRACTICAL NURSING

Practical Nursing is a two-year diploma program that prepares graduates to become LPNs (Licensed Practical Nurses). This program runs every other September, with the next intake beginning in September 2023.

ADULT LEARNING & UPGRADING

Learn in a supportive environment that truly understands today's world of adult education. Finish your high school diploma, complete prerequisites for post-secondary or increase your previous high school marks with Assiniboine's Centre for Adult Learning.

The Mature High School program is one of the branches under the Centre for Adult Learning; it allows you to obtain your high school diploma, along with additional credit and upgrading options, so you're ready for future college studies. The program starts every September and January, with day or evening options available.

TRADES PROGRAMS

Parkland campus now offers rotating trade programs. Applied Building Construction begins in February 2022 and includes a three-week practicum. Graduates of this program will be eligible for Level 1 through Apprenticeship Manitoba.

For more information on upcoming trades programs available in Parkland, visit assiniboine.net/programs. Applied trades programming may include carpentry, plumbing and/or electrical.

NEW IN 2022

Beginning in September 2022, Parkland campus plans to offer the Social Service Worker diploma. In this two-year program, learn to make a meaningful difference in the lives of others while you promote social well-being and long-lasting change.

To learn more about this program, attend an upcoming online program information session or go to assiniboine.net/ssw.

PARKLAND EARLY LEARNING CENTRE

Our non-profit early learning centre, Parkland Campus Kids Inc., is licensed for 28 pre-schoolers and 12 infants and students get preferred access for their childcare needs. The centre is open weekdays from 7:30 a.m. to 5 p.m. and offers a hot lunch program, as well as two healthy snacks every day.



WINNIPEG CAMPUS
WINNIPEG

Our Practical Nursing program and Continuing Studies courses are offered at this urban campus.

assiniboine.net/winnipeg



**COMMUNITY-BASED
TRAINING &
RURAL
ROTATING
SITES**

Community-based education is part of Assiniboine's DNA, and it's one of the ways we help communities and regions address their specific labour market needs. In fact, we're a leader in this area. Community-based delivery is when we offer one of our programs in a location where we don't have a permanent campus, allowing students to live and study where they otherwise may not have the opportunity. Programs are often in the areas of skilled trades, health care, human services, business, and agriculture. Often there is an adult upgrading component, allowing Assiniboine students to complete both their high school education and become a college graduate!

This past academic year, despite a global pandemic, we delivered programs in communities across Manitoba. We see tremendous success in this approach, particularly as it relates to self-determination and prosperity for First Nations, Métis and Inuit communities.

We also host rural rotating sites for our Practical Nursing program, in addition to our permanent offerings of the program at our Brandon, Winnipeg and Dauphin campuses. In the past several years, we've delivered our Practical Nursing program in a wide variety of communities across Manitoba, including Russell, Melita, Peguis First Nation, Selkirk, Portage la Prairie, and Pine Falls.

STUDENT SUPPORTS

WE'RE HERE FOR YOU!



ADVICE & RESOURCES

STUDENT SUCCESS ADVISORS

Student success advisors are available at the Victoria Avenue East campus, the North Hill campus, the Parkland campus in Dauphin, and at the Winnipeg campus.

Their goal is to help students achieve success at Assiniboine by providing them with support, advice, information and assistance whenever needed. Each academic area has a student success advisor. To connect with the advisor for your program, visit assiniboine.net/studentservices for details.

SUPPORT & ACCOMMODATION

ACCESSIBILITY/DISABILITY SERVICES

Accessibility/disability services exist for students who have identified as having a documented disability and require accommodations to reduce barriers to learning and promote fair and equal access to courses, programs, facilities and services.

We can organize many services, including:

- » Accommodations for admissions testing
- » Financial information and assistance with applications
- » Transition assistance: orientation to campus
- » Co-ordination of access to special materials, equipment and/or software
- » Learning supports

Email us at ads@assiniboine.net or contact the student accessibility coordinator at 204-725-8700 ext 6052.

HELPFUL RESOURCES

THE LIBRARY

The friendly Assiniboine library staff are happy to help you at all college locations, both in-person and virtually, any time the library is open. Get help with research, finding library materials, searching and evaluating online information, and APA citation. Online resources such as tutorials, research databases and eBooks are available at all times through our webpage. You also have access to library materials like books, journals, magazines and DVDs to support you in your studies. Enjoy our quiet work and study areas on campus.

The central library is at the Victoria Avenue East campus with a branch library at the North Hill campus. Contact the library by email at library@assiniboine.net, phone at 204.725.8727 or 800.862.6307 ext. 6638, or fill out our online help request form, available at assiniboine.net/library.

GET TO KNOW ASSINIBOINE

PROGRAM INFORMATION SESSION

Find out more about Assiniboine student life, services and supports at our 45-minute online information session. Ask questions, speak with recruitment specialists and learn about what sets Assiniboine apart. Check out the upcoming session schedule and register at assiniboine.net/infoession.

LEARNING CURVE

The Learning Curve staff offer individualized academic support to help you meet your goals while attending Assiniboine.

The Learning Curve at our Victoria Avenue East campus and the Learning Hub at our North Hill campus in Brandon are one-stop shops for all your academic support needs. You can also find us at the Parkland campus in Dauphin and at our Winnipeg campus.

Our learning strategists and educational assistants support you to find effective ways of learning. We encourage active learning and collaborate with you to find strategies that make sense in your life. We provide referrals to student success advisors, the library and other resources as you work towards meeting your academic goals.

Whether online or in-person, our knowledgeable and friendly Learning Curve team can help you:

- » Study less and learn more – learning strategies, note-taking, goal setting
- » Improve your test results – test/exam prep, study skills, memory techniques
- » Get better at math – foundational math refreshers, program-specific content
- » Do more with your time – organization, time management
- » Manage your stress – mindfulness training, test anxiety, relaxation techniques
- » Develop your writing skills – APA support, proofreading, effective writing techniques
- » Work with technology – computer support (e.g. Microsoft Office Suite, assistive technology)

If you're looking for a head start and are interested in any of the above, you don't need to wait until you are on campus. Our resources are available online via the Learning Curve Library Guide at assiniboine.libguides.com/lc.

You can also schedule appointments with us before classes start, and book online whenever you want. Our secure booking site is open 24 hours a day, 7 days a week, 365 days of the year. Book an appointment online at acclearningcurve.as.me. You will even get text and email reminders once you book an appointment!

The Learning Curve: providing academic support so students gain the skills and knowledge to meet their goals in learning, work and life.



STUDENT RESOURCES

LOCKERS

You will be assigned a locker and information will be given to you regarding the rules and regulations of locker use when classes begin. You must provide your own lock, which you can bring from home or purchase at Assiniboine's bookstore.

FOOD

Our Victoria Avenue East and North Hill campuses offer cafeteria services. Use cash, debit, credit or load up a meal card to enjoy daily breakfast and lunch specials. Coffee and grab-and-go items are also available throughout the day. Microwaves are available for use at all campuses if you choose to bring meals from home.

ASSINIBOINE BOOKSTORE

The Assiniboine bookstore is open at the Victoria Avenue East campus from 8 a.m. to 4 p.m., Monday to Friday. Here you can buy or rent new and used print or digital textbooks. There's also an opportunity to sell them back to us. Stock up on supplies and snacks to study with friends, and grab a clean and comfy sweatshirt for that long study session ahead. You can cut down on exam jitters when you know we've got you covered with notebooks, pens, pencils and calculators. You can also show off your school spirit with a t-shirt, coffee mug, backpack or socks.

FITNESS CENTRE

The college offers a fitness centre exclusive to Assiniboine students and staff at its Victoria Avenue East campus in Brandon. This centre provides cardio and weight machines, as well as free weights and stretching areas.

PARKING/TRANSIT

For students studying at campuses in Brandon, a free transit bus pass (U-Pass) is included in your student fees. This pass is available at the Students' Association office at the Victoria Avenue East campus.

If you are driving to school, parking is available on a first-come, first-served basis. Some campuses offer paid scramble parking lots, while others have free scramble parking lots. For more information on parking and fees at all campuses, visit assiniboine.net/parking.

CHILDCARE

If you are looking for childcare, the Assiniboine Early Learning Centre at the Victoria Avenue East campus in Brandon is licensed for 56 children, ranging from three months to six years of age. The centre is open weekdays from 7:30 a.m. to 5:30 p.m. year-round. Students and staff of Assiniboine campuses in Brandon are given priority; however, space is not guaranteed.

In Dauphin, Parkland Campus Kids Inc. is licensed for 28 pre-school children and 12 infants. The centre is open weekdays from 7:30 a.m. to 5 p.m. and offers a hot lunch program, as well as two healthy snacks every day. Students attending classes at Parkland campus get preferred access for their childcare needs.

For more information, call 204.725.8713 for the Assiniboine Early Learning Centre in Brandon and 204.622.2222 for Parkland Campus Kids Inc. in Dauphin.

GETTING SETTLED

The search for a place to live should begin early as housing can be more difficult to find toward the end of the summer. Students who arrive in late August often face a limited choice and higher costs.

Our partner, Places4Students Inc., provides students, schools and landlords with the highest quality, off-campus housing service. The website provides a large, real-time database for student housing vacancies in Brandon and Dauphin, and includes photos and text, contact information and property features. Students can also post a free roommate or sublet advertisement. Visit places4students.com and search for Assiniboine Community College.

Brandon University welcomes Assiniboine students in single (one-person) residences located three kilometres from our Victoria Avenue East campus, with easy access to bus services. Brandon University residency is also included in the Places4Students Inc. search, but you can also learn more on the Brandon University website at brandonu.ca/residence.

DISCOVER ASSINIBOINE

Ever wonder what it's like to be an Assiniboine student? Take a peek at dozens of student experiences by visiting assiniboine.net/news. Here you'll find story after story showcasing what makes Assiniboine programs, projects and campus life special. Read up on student achievements, the college's latest partnerships and more!

Visit assiniboine.net/news to explore life on campus.

FINANCIAL AID & AWARDS

Don't let the cost of education hold you back. Everyone should consider applying for financial aid and awards—chances are you're eligible for some support. You can receive funding from more than one source, so do your research and ensure you apply to all possibilities.

Need a little guidance? Visit assiniboine.net/financialaid or email our associate registrar's office at awards@assiniboine.net.

ASSINIBOINE SCHOLARSHIPS AND BURSARIES

Approximately \$400,000 is available to students each year. This includes entrance awards for first-year students, as well as bridging awards for second-year students. To find and apply for scholarships and bursaries, and for applicable deadlines and timelines, please visit assiniboine.net/awards and use our online awards search tool.

GOVERNMENT STUDENT AID

Student loans are available to students through provincial and federal student aid programs. Non-repayable grants and bursaries are also available. Student loans stay interest-free for a period of six months after you complete your schooling. If you are studying full-time, you can apply online. If you are studying part-time or by distance education, you must complete a paper application. If you have not lived in Manitoba for a minimum of 12 months prior to starting school, you must apply for financial aid through your home province.

Visit manitobastudentaid.ca to learn more.

OTHER FUNDING OPPORTUNITIES

If you are currently receiving employment insurance (EI), financial assistance may be available through Manitoba Industry, Training and Employment Services (a branch of the provincial government). For more information call 866.332.5077.

Indigenous students are encouraged to contact their local band authority, tribal council or regional Métis Federation office to discuss sponsorship opportunities.

Financial assistance may be available to students with a disability related to a chronic medical condition, physical or learning disability, and mental health issues through agencies such as Employability Assistance for People with Disabilities, Manitoba Possible or CNIB (Canadian National Institute for the Blind). Please contact these agencies directly to find out more.

Assiniboine is a post-secondary partner with the Tuition Waiver program, which provides financial assistance to anyone who has ever been in care in the Manitoba child welfare system.

If you are not eligible for government financial assistance, you may be able to receive a student line of credit through most banks and credit unions. This type of loan does not have an interest-free period, and you must make interest payments on any money drawn on the account while still in school. You may also be able to use your RESPs or RRSPs to pay for schooling if you have met all of the criteria set forth in the federal government of Canada's lifelong learning plan.

COUGAR PRIDE

Join the Team

Cougar men's and women's volleyball, soccer and futsal teams play in the Manitoba Colleges Athletic Conference against other post-secondary schools in the province. Our women's hockey team plays in the American Collegiate Hockey Association against schools in the Northern United States.

You must be a full-time student at Assiniboine to play for the Cougars. Assiniboine provides travel, meals, accommodations and clothing to our student athletes.

For more information on Cougar Athletics, visit assiniboine.net/athletics or contact our Athletics Manager at cougars@assiniboine.net.



@Cougars ACC



@Cougars ACC



Assiniboine Cougars



The Cougars' women's hockey team are 2019 ACHA Division II Champions and went undefeated in the 2019-20 season.

CAMPUS LIFE

ACCSA: YOUR STUDENTS' ASSOCIATION

The ACC Students' Association (ACCSA) exists to serve you. Our Students' Association council works hard to ensure we voice relevant student perspectives, provide representation on college committees and engage with student projects. We strive to deliver quality services that address the specific needs of students and to host events and programming that create a social atmosphere and offer stress relief.

OUR SERVICES INCLUDE:

- » Leadership training opportunities
- » Student health and dental insurance
- » U-Pass, free bus transit (Brandon campuses only)
- » Paw Pass, student discount program
- » Advocacy and appeal support
- » Student clubs
- » ...and much, much more!

OUR EVENTS AND ACTIVITIES INCLUDE:

- » Orientation week activities and events
- » Socials
- » Wellness and mental health initiatives
- » Multicultural activities and events
- » Recreational activities and events
- » Professional development opportunities
- » ... and more!

Learn more at accstudents.com or find us on social media at:



@accsamb



ACC Students' Association

ASSINIBOINE
COMMUNITY COLLEGE
STUDENTS' ASSOCIATION





INDIGENOUS STUDENT SUPPORTS

ACC SUPPORTS
RECONCILIATION
—EVERY CHILD
MATTERS.



Our Indigenous Affairs team offers a wide-range of support and services to assist students along their post-secondary journey.

We connect students with student success advisors and important community resources; we aim to provide guidance to First Nation, Métis and Inuit students from a holistic perspective to support their academic goals. We act as a resource for all students and faculty in their effort to acquire a true understanding of Indigenous cultures and ways of knowing.

All students are encouraged to access our services and participate in events on campus, such as:

- » Indigenous Student Welcome
- » Fall Feast
- » Holistic, proactive advising and support
- » Elder and Knowledge Keepers' program
- » Family events
- » Cultural celebrations, activities and teachings
- » Peer mentoring and role models
- » Student Success Celebration and Pow Wow

TRADITIONAL KNOWLEDGE AND TEACHINGS

Visiting Elders and Knowledge Keepers are available at all Brandon campuses for traditional knowledge and teachings. They represent Dakota, Lakota, Ojibway, St'at'imc and Métis nations, and provide guidance, teachings, historical information, traditional knowledge and support to all students.

Although our Elders are not always present on campus, they will meet with students anytime there is a request to do so. Meeting with an Elder may be as informal as a casual visit or can include cultural or spiritual teachings and guidance at your request.

PEER MENTORSHIP PROGRAM

The Indigenous Peer Mentoring Program pairs new and returning Indigenous students to meet for a few hours each month to support positive connections and student success.

Participate in activities such as one-on-one and group mentoring sessions, cultural events, study groups and sharing circles.

Meet new people, navigate and access college and community supports, build communication and relationship skills, and help other students embrace their culture!

Assiniboine Community College campuses are located on the traditional territories of Treaty No. 1 and Treaty No. 2, and the shared traditional lands of Cree, Oji-Cree, Dakota, Dene and Anishinabek/Ojibwe peoples, and the homeland of the Métis nation. We also recognize other Treaty territories where our community-based training takes place. We welcome students who seek knowledge here.

FREE TO APPLY!
TUITION-FREE,
LOW COURSE FEES!

ADULT LEARNING & UPGRADING

Open the door to a world of exciting careers by upgrading your skills, completing your high school diploma or entering into one of our integrated programs.

Take courses that suit your schedule! Assiniboine has two Centres for Adult Learning—one in Brandon at our Victoria Avenue East campus and one at our Parkland campus in Dauphin. Both offer day and evening classes and two intakes a year.

Earn your Mature Student High School diploma, upgrade your marks or complete required prerequisite courses for entrance into post-secondary programs. We offer several courses that are integrated with a college program, meaning you earn your high school diploma and a college certificate at the same time! A personalized education plan is developed individually with each student to address your specific needs and future goals.

- Choose from:**
- » Mature Student High School (MSHS)
 - » MSHS - Additional Credits (upgrading for high school graduates)
 - » Integrated Comprehensive Health Care Aide (graduate with both a MSHS diploma and a Comprehensive Health Care Aide certificate)
 - » Integrated Education Assistant (graduate with both a MSHS diploma and an Education Assistant certificate)

ASSINIBOINE INTERNATIONAL

We welcome hundreds of students from around the globe every year to study here!

International students benefit from a wide range of supports to ensure they have a rewarding and valuable student experience at Assiniboine. From our comprehensive new student orientation, to our student success advisors, to our knowledgeable and passionate instructors, we support student success.

Many of our certificate, diploma and advanced diploma programs are available to international students. A Regulated International Student Immigration Advisor (RISIA) can answer your questions related to study permits and work eligibility. We also offer an English for Academic Purposes program where we prepare you with English language training, academic preparation and cultural orientation if you do not meet English Language Proficiency admission requirements.

Assiniboine International staff are jointly located at our Victoria Avenue East campus and are here to help you at every stage of your student experience.

Visit assiniboine.net/international for more information.

ENGLISH AS A SECOND LANGUAGE (ESL)

At our Victoria Avenue East campus, located in Brandon, Manitoba, Assiniboine offers tuition-free classes for permanent residents and refugees to improve their English skills. We specialize in English language training for students with Canadian Language Benchmark (CLB) levels 5-8. Our school provides a friendly and relaxing environment for you to come to learn and meet new people from across the globe. Funding for our ESL programming is provided by Immigration, Refugees and Citizenship Canada.

- There are three semesters held each year:**
- » September to December
 - » January to March
 - » April to June

Within each semester, Assiniboine has several class options available, including daytime, evening and weekend classes.

To attend ESL classes, you must have completed CLB level 4 or higher in listening, speaking, reading and writing, and you must have permanent resident status.

For more information, visit assiniboine.net/esl. To register for classes, phone 204-725-8744 or email esl@assiniboine.net.

CONTINUING STUDIES

Whether you are looking for professional development, personal enrichment or a new career path, Continuing Studies at Assiniboine has something for you.

We offer a wide-range of programming options from short courses to certificates—delivered in-person, online or in blended formats.

Assiniboine works in partnership with businesses, Indigenous communities, private agencies, and government departments to develop and deliver training to meet labour market and workforce needs.

Custom education opportunities, no matter the scale, can be delivered at one of our campuses, at the place of business, in community, online, or using a blend of multiple approaches.

Find out more by contacting us at:
assiniboine.net/cs
continuingstudies@assiniboine.net

SASKATCHEWAN

ADMISSION REQUIREMENTS (CERTIFICATE AND DIPLOMA)

All programs require a complete Grade 12 diploma (except Mature Student High School). Most programs also have specific subject requirements as listed below. All students with E, M or I courses will be referred to our assessment of special circumstance.

Please visit assiniboine.net/register for more information.

English is the language of instruction at Assiniboine. All applicants educated outside of Canada, or a country not on the test-exempt list, are expected to meet the English language proficiency requirement. Please visit assiniboine.net/elp for more information. For advanced diploma admission requirements, visit assiniboine.net/advanced.

PROGRAMS	ADMISSION REQUIREMENTS	NOT REQUIRED, BUT RECOMMENDED	ADDITIONAL PROGRAM REQUIREMENTS
Agribusiness	Grade 12 diploma, including ELA A30 or B30; any Math 30	Computer competency (Windows); Foundations Math 30; one or more science courses at the Grade 11 level, especially Biology and Chemistry	This program has additional program requirements and/or considerations. To view the full list, please visit assiniboine.net/agribusiness .
Automotive Technician	Grade 12 diploma, including any Math 30	Computer competency (Windows)	
Business Administration ¹ Accounting, Financial Services, Human Resource Management and Marketing specializations	Grade 12 diploma, including ELA A30 or B30; any Math 30	Minimum 65% in English and Math; Foundations Math 30 recommended for Accounting and Financial Services specializations	
Carpentry and Woodworking	Grade 12 diploma, including any Math 30		This program has additional program requirements and/or considerations. To view the full list, please visit assiniboine.net/carpentry .
Civil Technician	Grade 12 diploma, including ELA A30 or B30; Foundations or Pre-Calculus Math 30 with a minimum mark of 65%		
Communications Engineering Technology	Grade 12 diploma, including ELA A30 or B30; Foundations or Pre-Calculus Math 30 (<i>applicants with Workplace and Apprenticeship Math 30 will be required to write a math test</i>)	Senior-level Physics; physical sciences and computer courses	
Comprehensive Health Care Aide ¹	Grade 12 diploma, Level 1 CPR – HCP/BLS certification; criminal record check; child and adult abuse registry checks	ELA A30 or B30	This program has additional program requirements and/or considerations. To view the full list, please visit assiniboine.net/chca .
Construction Electrician	Grade 12 diploma, including any Math 30	Foundations Math 30	
Culinary Arts	Grade 12 diploma, including ELA A30 or B30; any Math 30		
Digital Art and Design	Grade 12 diploma, including ELA A30 or B30 with a minimum mark of 65%.		
Early Childhood Education ¹	Grade 12 diploma, including ELA A30 or B30 with a minimum mark of 60%; criminal record check; child abuse registry check	Computer competency (Windows)	
Education Assistant	Grade 12 diploma; criminal record check; child abuse registry check; CPR Level C certification	Minimum 60% in ELA A30 or B30	
Heavy Equipment Technician/ Agricultural Equipment Technician/ Truck and Transport Mechanic	Grade 12 diploma; any Math 30	Computer competency (Windows)	This program has additional program requirements and/or considerations. To view the full list, please visit assiniboine.net/heavyequip assiniboine.net/agtech assiniboine.net/transportmech .
Horticultural Production	Grade 12 diploma, including ELA A30 or B30; any Math 30	Computer competency (Windows)	
Hotel and Restaurant Management	Grade 12 diploma, including ELA A30 or B30; any Math 30; minimum age of 18 by program start date	Minimum 60% in Math and ELA A30 or B30; Foundations Math 30	This program has additional program requirements and/or considerations. To view the full list, please visit assiniboine.net/hotel .
Industrial Metals Fabrication	Grade 12 diploma, including any Math 30 with a minimum mark of 60%	Foundations Math 30	
Land and Water Management	Grade 12 diploma, including ELA A30 or B30; Foundations or Pre-Calculus Math 30 (<i>applicants with Workplace and Apprenticeship Math 30 will be required to write a math test</i>)	Computer competency (Windows); Biology and Chemistry at the Grade 12 level	This program has additional program requirements and/or considerations. To view the full list, please visit assiniboine.net/landandwater .
Legal Administration	Grade 12 diploma, including ELA A30 or B30; any Math 30	Minimum 65% in ELA A30 or B30 and Math; computer courses	
Media and Communications	Grade 12 diploma, including ELA A30 or B30 with a minimum mark of 65%.		
Medical Administration	Grade 12 diploma, including ELA A30 or B30; any Math 30	Minimum 65% in ELA A30 or B30 and Math; computer courses	
Network Administration Technology	Grade 12 diploma, including ELA A30 or B30; any Math 30		
Office Management	Grade 12 diploma, including ELA A30 or B30; any Math 30	Minimum 65% in ELA A30 or B30 and Math; computer courses	
Office Skills	Grade 12 diploma, including ELA A30 or B30; any Math 30	Minimum 65% in ELA A30 or B30 and Math; computer courses	
Piping Trades	Grade 12 diploma, including any Math 30	Foundations Math 30; computer courses	This program has additional program requirements and/or considerations. To view the full list, please visit assiniboine.net/piping .
Power Engineering	Grade 12 diploma, including ELA A30 or B30; any Math 30; Physics 30 or Chemistry 30		
Practical Nursing ^{1/3}	Grade 12 diploma, including ELA A30 or B30 with minimum mark of 60%; Any Math 30 with minimum mark of 60%; Biology 30 with minimum mark of 60%; Math for Nurses (Math-0014) with a minimum mark of 95%; CPR – Level 1 HCP/BLS certification; criminal record check; child and adult abuse registry checks	Computer competency (Windows)	This program is competitive entry program and has additional program requirements and/or considerations. To view the full list, please visit assiniboine.net/nursing .
Public Safety	Grade 12 diploma, including ELA A30 or B30 with a minimum mark of 70%; hearing and vision tests; medical release; valid driver's license abstract; emergency first aid, including CPR Level C certification; criminal record check; child and adult abuse registry checks; supplemental application form		This is a competitive entry program; for details, see assiniboine.net/publicsafety .
Social Service Worker ¹	Grade 12 diploma, including ELA A30 or B30 with a minimum mark of 60%; criminal record check; child and adult abuse registry checks		
Web and Interactive Development	Grade 12 diploma, including ELA A30 or B30 with a minimum mark of 65%		
Mature Student High School ^{1/2} Mature Student High School ^{1/2} Integrated Comprehensive Health Care Aide ^{1/2} Integrated Education Assistant ²	Must be 19 years of age or older at time of enrolment or reach the age of 19 prior to course completion; must have been out of high school six months or more		Compulsory orientation; academic assessment.

All programs listed above are offered in Brandon, MB. Additional location options are noted where applicable.

- 1. Also available at the Parkland campus in Dauphin, MB
- 2. Available at the Centre for Adult Learning - Brandon, MB
- 3. Also available at the Winnipeg campus in Winnipeg, MB

Note: The information listed in this table is subject to change; check each program's webpage for the for the most up-to-date information.

MANITOBA

ADMISSION REQUIREMENTS (CERTIFICATE AND DIPLOMA)

All programs require a complete Grade 12 diploma (except Mature Student High School). Most programs also have specific subject requirements as listed below. Where Consumer/Essential Math 40S is listed as the minimum requirement, Applied and Pre-Calculus Math 40S will be acceptable. All students with E, M or I courses will be referred to our assessment of special circumstance.

Please visit assiniboine.net/registrar for more information.

English is the language of instruction at Assiniboine. All applicants educated outside of Canada, or a country not on the test-exempt list, are expected to meet the English language proficiency requirement. Please visit assiniboine.net/elp for more information. For advanced diploma admission requirements, visit assiniboine.net/advanced.

PROGRAMS	ADMISSION REQUIREMENTS	NOT REQUIRED, BUT RECOMMENDED	ADDITIONAL PROGRAM REQUIREMENTS
Agribusiness	Grade 12 diploma, including English 40G/40S; Consumer/Essential Math 40S	Computer competency (Windows); Applied Math 40S; one or more science courses at the Grade 11 level, especially Biology and Chemistry	This program has additional program requirements and/or considerations. To view the full list, please visit assiniboine.net/agribusiness .
Automotive Technician	Grade 12 diploma, including Consumer/Essential Math 40S	Computer competency (Windows)	
Business Administration ¹ Accounting, Financial Services, Human Resource Management and Marketing specializations	Grade 12 diploma, including English 40G/40S; Consumer/Essential Math 40S	Minimum 65% in English and Math; Applied Math 40S recommended for Accounting and Financial Services specializations	
Carpentry and Woodworking	Grade 12 diploma, including Consumer/Essential Math 40S		This program has additional program requirements and/or considerations. To view the full list, please visit assiniboine.net/carpentry .
Civil Technician	Grade 12 diploma, including English 40G/40S; Applied or Pre-Calculus Math 40S with a minimum mark of 65%		
Communications Engineering Technology	Grade 12 diploma, including English 40G/40S; Applied or Pre-Calculus Math 40S (<i>applicants with Consumer/Essential Math 40S, Math 40G or Math 301 will be required to write a math test</i>)	Senior-level Physics; physical sciences and computer courses	
Comprehensive Health Care Aide ¹	Grade 12 diploma, Level 1 CPR – HCP/BLS certification; criminal record check; child and adult abuse registry checks	English 40G/40S	This program has additional program requirements and/or considerations. To view the full list, please visit assiniboine.net/chca .
Construction Electrician	Grade 12 diploma, including Consumer/Essential Math 40S	Applied Math 40S	
Culinary Arts	Grade 12 diploma, including English 40G/40S; Consumer/Essential Math 40S		
Digital Art and Design	Grade 12 diploma, including English 40G/40S with a minimum mark of 65%.		
Early Childhood Education ¹	Grade 12 diploma, including English 40G/40S with a minimum mark of 60%; criminal record check; child abuse registry check	Computer competency (Windows)	
Education Assistant	Grade 12 diploma; criminal record check; child abuse registry check; CPR Level C certification	Minimum 60% in English 40G/40S	
Heavy Equipment Technician/ Agricultural Equipment Technician/ Truck and Transport Mechanic	Grade 12 diploma, including Consumer/Essential Math 40S		This program has additional program requirements and/or considerations. To view the full list, please visit assiniboine.net/heavyequip assiniboine.net/agtech assiniboine.net/transportmech .
Horticultural Production	Grade 12 diploma, including English 40G/40S; Consumer/Essential Math 40S	Computer competency (Windows)	
Hotel and Restaurant Management	Grade 12 diploma, including English 40G/40S; Consumer/Essential Math 40S; minimum age of 18 by program start date	Minimum 60% in Math and English; Applied Math 40S	This program has additional program requirements and/or considerations. To view the full list, please visit assiniboine.net/hotel .
Industrial Metals Fabrication	Grade 12 diploma, including Consumer/Essential Math 40S with a minimum mark of 60%	Applied Math 40S	
Land and Water Management	Grade 12 diploma, including English 40G/40S; Applied or Pre-Calculus Math 40S (<i>applicants with Consumer/Essential Math 40S, Math 40G or Math 301 will be required to write a math test</i>)	Computer competency (Windows); Biology and Chemistry at the grade 12 level	This program has additional program requirements and/or considerations. To view the full list, please visit assiniboine.net/landandwater .
Legal Administration	Grade 12 diploma, including English 40G/40S; Consumer/Essential Math 40S	Minimum 65% in English and Math; computer courses	
Media and Communications	Grade 12 diploma, including English 40G/40S with a minimum mark of 65%.		
Medical Administration	Grade 12 diploma, including English 40G/40S; Consumer/Essential Math 40S	Minimum 65% in English and Math; computer courses	
Network Administration Technology	Grade 12 diploma, including English 40G/40S; Consumer/Essential Math 40S with a minimum mark of 60%		
Office Management	Grade 12 diploma, including English 40G/40S; Consumer/Essential Math 40S	Minimum 65% in English and Math; computer courses	
Office Skills	Grade 12 diploma, including English 40G/40S; Consumer/Essential Math 40S	Minimum 65% in English and Math; computer courses	
Piping Trades	Grade 12 diploma, including Consumer/Essential Math 40S	Applied Math 40S; computer courses	This program has additional program requirements and/or considerations. To view the full list, please visit assiniboine.net/piping .
Power Engineering	Grade 12 diploma including English 40G/40S; Pre-Calculus or Applied Mathematics 40S; Physics 30S or Chemistry 30S		
Practical Nursing ^{1/3}	Grade 12 diploma, including English 40G/40S with minimum mark of 60%; Pre-Calculus, Applied, or Consumer/ Essential Math 40S with minimum mark of 60%; Biology 40S with minimum mark of 60%; Math for Nurses (Math-0014) with a minimum mark of 95%; CPR – Level 1 HCP/BLS certification; criminal record check; child and adult abuse registry checks	Computer competency (Windows)	This program is competitive entry program and has additional program requirements and/or considerations. To view the full list, please visit assiniboine.net/nursing .
Public Safety	Grade 12 diploma, including English 40G/40S with a minimum mark of 70%; hearing and vision tests; medical release; valid driver's license abstract; emergency first aid, including CPR level C certification; criminal record check; child and adult abuse registry checks; supplemental application form		This is a competitive entry program; for details, see assiniboine.net/publicsafety .
Social Service Worker ¹	Grade 12 diploma, including English 40G/40S with a minimum mark of 60%; criminal record check; child and adult abuse registry checks		
Web and Interactive Development	Grade 12 diploma, including English 40G/40S with a minimum mark of 65%.		
Mature Student High School ^{1/2} Mature Student High School ^{1/2} Integrated Comprehensive Health Care Aide ^{1/2} Integrated Education Assistant ²	Must be 19 years of age or older at time of enrolment or reach the age of 19 prior to course completion; must have been out of high school six months or more		Compulsory orientation; academic assessment.

All programs listed above are offered in Brandon, MB. Additional location options are noted where applicable.

- Also available at the Parkland campus in Dauphin, MB
- Available at the Centre for Adult Learning - Brandon, MB
- Also available at the Winnipeg campus in Winnipeg, MB

Note: The information listed in this table is subject to change; check each program's webpage for the for the most up-to-date information.

ONTARIO

ADMISSION REQUIREMENTS (CERTIFICATE AND DIPLOMA)

All programs require a complete Grade 12 diploma (except Mature Student High School). Most programs also have specific subject requirements as listed below. All students with E, M or I courses will be referred to our assessment of special circumstance.

Please visit assiniiboine.net/register for more information.

English is the language of instruction at Assiniboine. All applicants educated outside of Canada, or a country not on the test-exempt list, are expected to meet the English language proficiency requirement.

Please visit assiniiboine.net/elp for more information.

For advanced diploma admission requirements, visit assiniiboine.net/advanced.

PROGRAMS	ADMISSION REQUIREMENTS	NOT REQUIRED, BUT RECOMMENDED	ADDITIONAL PROGRAM REQUIREMENTS
Agribusiness	Grade 12 diploma, including English 4U or 4C; any Math 4U or 4C	Computer competency (Windows); Math MCT4C or any Math 4U; one or more science courses at the Grade 11 level or higher, especially Biology and Chemistry	This program has additional program requirements and/or considerations. To view the full list, please visit assiniiboine.net/agribusiness .
Automotive Technician	Grade 12 diploma, including any Math 4U or 4C	Computer competency (Windows)	
Business Administration ¹ Accounting, Financial Services, Human Resource Management and Marketing specializations	Grade 12 diploma, including English 4U or 4C; any Math 4U or 4C	Minimum 65% in English and Math; Math MCT4C recommended for Accounting and Financial Services specializations	
Carpentry and Woodworking	Grade 12 diploma, including any Math 4U or 4C		This program has additional program requirements and/or considerations. To view the full list, please visit assiniiboine.net/carpentry .
Civil Technician	Grade 12 diploma, including English 4U or 4C; Math MCT4C or any Math 4U with a minimum mark of 65%		
Communications Engineering Technology	Grade 12 diploma, including English 4U or 4C; Math MCT4C or any Math 4U (<i>applicants with Math MAP or MEL will be required to write a math test</i>)	Senior-level Physics: physical sciences and computer courses	
Comprehensive Health Care Aide ¹	Grade 12 diploma, Level 1 CPR – HCP/BLS certification; criminal record check; child and adult abuse registry checks	English 4C or 4U	This program has additional program requirements and/or considerations. To view the full list, please visit assiniiboine.net/chca .
Construction Electrician	Grade 12 diploma, including any Math 4C or 4U	Math MCT4C	
Culinary Arts	Grade 12 diploma, including English 4U or 4C; any Math 4U or 4C		
Digital Art and Design	Grade 12 diploma, including English 4C or 4U with a minimum mark of 65%		
Early Childhood Education ¹	Grade 12 diploma, including English 4C or 4U with a minimum mark of 60%; criminal record check; child abuse registry check	Computer competency (Windows)	
Education Assistant	Grade 12 diploma; criminal record check; child abuse registry check; CPR Level C certification	Minimum 60% in English 4U or 4C	
Heavy Equipment Technician/ Agricultural Equipment Technician/ Truck and Transport Mechanic	Grade 12 diploma, including any Math 4U or 4C		This program has additional program requirements and/or considerations. To view the full list, please visit assiniiboine.net/heavyequip assiniiboine.net/agtech assiniiboine.net/transportmech .
Horticultural Production	Grade 12 diploma, including English 4U or 4C; any Math 4U or 4C	Computer competency (Windows)	
Hotel and Restaurant Management	Grade 12 diploma, including English 4U or 4C; any Math 4U or 4C; minimum age of 18 by program start date	Minimum 60% in Math and English; Math MCT4C	This program has additional program requirements and/or considerations. To view the full list, please visit assiniiboine.net/hotel .
Industrial Metals Fabrication	Grade 12 diploma, including any Math 4U or 4C with a minimum mark of 60%	Math MCT4C	
Land and Water Management	Grade 12 diploma, including English 4U or 4C; Math MCT4C or any Math 4U (<i>applicants with Math MAP or MEL will be required to write a math test</i>)	Computer competency (Windows); Grade 12 Biology and Chemistry	This program has additional program requirements and/or considerations. To view the full list, please visit assiniiboine.net/landandwater .
Legal Administration	Grade 12 diploma, including English 4C or 4U; any Math 4U or 4C	Minimum 65% in English 4C or 4U and Math; computer courses	
Media and Communications	Grade 12 diploma, including English 4C or 4U with a minimum mark of 65%		
Medical Administration	Grade 12 diploma, including English 4C or 4U; any Math 4U or 4C	Minimum 65% in English 4C or 4U and Math; computer courses	
Network Administration Technology	Grade 12 diploma, including English 4C or 4U; any Math 4U or 4C with a minimum mark of 60%		
Office Management	Grade 12 diploma, including English 4C or 4U; any Math 4U or 4C	Minimum 65% in English 4C or 4U and Math; computer courses	
Office Skills	Grade 12 diploma, including English 4C or 4U; any Math 4U or 4C	Minimum 65% in English 4C or 4U and Math; computer courses	
Piping Trades	Grade 12 diploma, including any Math 4U or 4C	Math MCT4C; computer courses	This program has additional program requirements and/or considerations. To view the full list, please visit assiniiboine.net/piping .
Power Engineering	Grade 12 diploma, including English 4C or 4U; any Math 4U or 4C, Grade 11 Physics or Chemistry		
Practical Nursing ^{1/3}	Grade 12 diploma, including English 4C or 4U with minimum mark of 60%; any Math 4C or 4U with minimum mark of 60%; Biology 4U with minimum mark of 60%; Math for Nurses (Math-0014) with a minimum mark of 95%; CPR – Level 1 HCP/BLS certification; criminal record check; child and adult abuse registry checks	Computer competency (Windows)	This program is competitive entry program and has additional program requirements and/or considerations. To view the full list, please visit assiniiboine.net/nursing .
Public Safety	Grade 12 diploma, including English 4C or 4U with a minimum mark of 70%; hearing and vision tests; medical release; valid driver's license abstract; emergency first aid, including CPR Level C certification; criminal record check; child and adult abuse registry checks; supplemental application form		This is a competitive entry program; for details, see assiniiboine.net/publicsafety .
Social Service Worker ¹	Grade 12 diploma, including English 4C or 4U with a minimum mark of 60%; criminal record check; child and adult abuse registry checks		
Web and Interactive Development	Grade 12 diploma, including English 4C or 4U with a minimum mark of 65%		
Mature Student High School Mature Student High School ^{1/2} Integrated Comprehensive Health Care Aide ^{1/2} Integrated Education Assistant ²	Must be 19 years of age or older at time of enrolment or reach the age of 19 prior to course completion; must have been out of high school six months or more		Compulsory orientation; academic assessment.

All programs listed above are offered in Brandon, MB. Additional location options are noted where applicable.

- 1. Also available at the Parkland campus in Dauphin, MB
- 2. Available at the Centre for Adult Learning - Brandon, MB
- 3. Also available at the Winnipeg campus in Winnipeg, MB

Note: The information listed in this table is subject to change; check each program's webpage for the for the most up-to-date information.



AGRICULTURE & ENVIRONMENT

CERTIFICATE AND DIPLOMA PROGRAMS

AGRIBUSINESS TWO-YEAR DIPLOMA

Immerse yourself in one of Canada's largest industries. This comprehensive program will help you develop a strong foundation in the business of agriculture. Grow your skills in agronomy, sales and marketing, communications, customer service, research, finance, office management, livestock and computer applications.

CAREER OPPORTUNITIES
Grain companies • seed and crop input suppliers • banks and credit unions • livestock supply outlets • agricultural equipment dealers • government agencies • agronomists/consultants • cooperatives

assiniboine.net/agribusiness

HORTICULTURAL PRODUCTION NINE-MONTH CERTIFICATE

Learn the totality of food production while studying in our sustainable greenhouse at the North Hill campus. Focus your interests on three key sectors: fruits and vegetables, greenhouse production and nursery. Participate in pioneering research projects and help find ways to improve greenhouse management and food production.

CAREER OPPORTUNITIES
Fruit grower • vegetable grower • nursery assistant • integrated pest management (IPM) technician • plant propagator • garden centre worker • marketing and sales assistant • research assistant

assiniboine.net/horticultural

LAND AND WATER MANAGEMENT TWO-YEAR DIPLOMA

Your passion for the outdoors makes you a great candidate for a career in natural resources. This exciting program brings together natural resources, technology and the environment in an agricultural context. Learn about the environment, evaluate its health and become a positive role model in this era of agricultural and industrial expansion.

CAREER OPPORTUNITIES
Survey technician • water manager • habitat specialist • conservation technician • research • management • consulting • administration of sustainable land use practices

assiniboine.net/landandwater

ADVANCED DIPLOMAS *Requires a previous diploma or degree.*

AGRICULTURE EIGHT-MONTH ADVANCED DIPLOMA

Expand your business knowledge into the field of agribusiness. This program offers courses in agronomic topics such as soil fertility and crop pest management, as well as business and technology topics relevant to the industry.

CAREER OPPORTUNITIES
agriculture • agronomy • sales and service • finance • livestock • marketing • management • research • administration • precision agriculture

assiniboine.net/agadvanced

GEOGRAPHIC INFORMATION SYSTEMS EIGHT-MONTH ADVANCED DIPLOMA

Solve problems using the newest mapping technologies in a range of disciplines. Use geographic information systems (GIS), remote sensing and global positioning systems (GPS) to map variations in land, water, vegetation and nutrient conditions. Learn to analyze data, incorporate related information and translate it into practical applications.

CAREER OPPORTUNITIES
Land planning and resource management organizations • conservation districts • government • agribusinesses • consulting practices

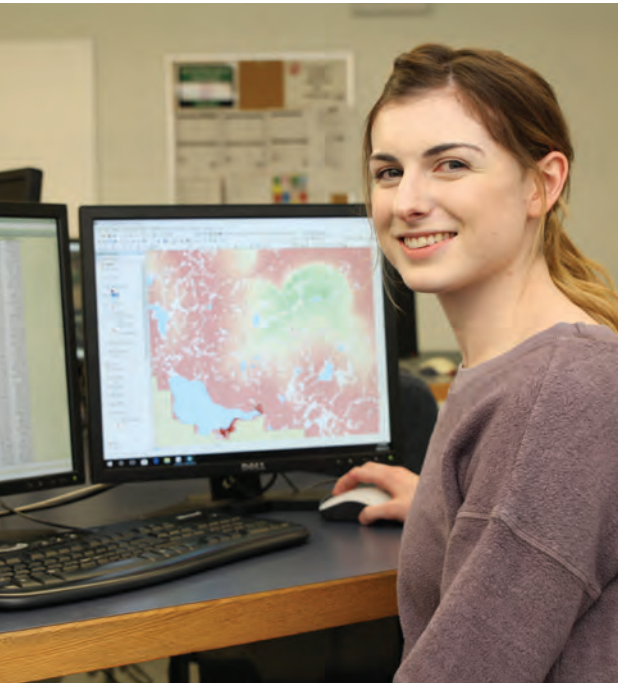
assiniboine.net/gis

SUSTAINABLE FOOD SYSTEMS NINE-MONTH ADVANCED DIPLOMA

Help research different greenhouse models and find out how to improve food security in cold climates. Learn leading-edge approaches to food production through greenhouse operations, fruit, vegetable and agronomic crop production, plant breeding, pest-management, plant propagation and nutrient management. Work closely with our faculty on current projects aimed at addressing food related issues in our country.

CAREER OPPORTUNITIES
Food security • innovation in food production at the local, national or international level • private sector • government • First Nations' organizations

assiniboine.net/sfs





BUSINESS & OFFICE

CERTIFICATE AND DIPLOMA PROGRAMS

BUSINESS ADMINISTRATION TWO-YEAR DIPLOMA

Today's business industry requires many personalities and skill sets to function. After completing all common courses in your first year, your second year will give you the opportunity to specialize in accounting, financial services, human resource management or marketing. Build your own business plan and develop your skills in negotiations, investments, selling, marketing and management.

CAREER OPPORTUNITIES

Corporations • start ups • non-profits • federal, provincial or municipal offices

assiniboine.net/business

LEGAL ADMINISTRATION TWO-YEAR DIPLOMA

Prepare for a stimulating career in law, justice or real estate with this two-year diploma. Understand Canadian legal processes in public and private law, gain higher administrative training and acquire experience transcribing for police departments and court rooms.

CAREER OPPORTUNITIES

Professional services • legal offices • municipal offices • land titles • judicial systems • mortgage companies

assiniboine.net/legal

MEDICAL ADMINISTRATION TWO-YEAR DIPLOMA

Enter into the diverse and expansive health care industry. Combine your administrative training with an understanding of the Canadian health care system and the technical knowledge that is fundamental to all medical workplaces. Become comfortable with medical office procedures and develop a solid understanding of transcription, pharmacology and diagnostic imagery.

CAREER OPPORTUNITIES

Hospitals • private practice • veterinary clinics • laboratories

assiniboine.net/medical

OFFICE MANAGEMENT TWO-YEAR DIPLOMA

Excel at all matters related to software, bookkeeping, human resources and communications. Achieve a well-rounded skill set that makes you adaptable to change and ready to conquer everyday challenges in the workplace. Develop your leadership skills to keep your team focused and productive, and receive advanced training in office procedures.

CAREER OPPORTUNITIES

Business manager • office manager • executive assistant

assiniboine.net/office

OFFICE SKILLS EIGHT-MONTH CERTIFICATE

This program prepares you for the constant change in business by emphasizing relevant courses in accounting, mathematics and communications. Graduate with the confidence and skills needed to be versatile and responsive.

CAREER OPPORTUNITIES

Administrative assistant • customer service representative • word processing specialist

assiniboine.net/officeskills

ADVANCED DIPLOMAS

Requires a previous diploma or degree.

ACCOUNTING EIGHT-MONTH ADVANCED DIPLOMA

With your previous credentials, enter this program and get further training in financial accounting, management, tax preparation and more. You have the ability to customize this program in order to prepare for the CPA Professional Education program.

CAREER OPPORTUNITIES

Public accounting firms • banks • trust companies • accounting and internal auditing departments • industrial firms • federal, provincial or municipal offices • school divisions • tribal councils • non-profit organizations • health care institutions • owner-managed business/office manager

assiniboine.net/accounting

FINANCE EIGHT-MONTH ADVANCED DIPLOMA

Continue to take on new challenges in the financial services industry by laddering your previous college diploma or university degree. Courses are also offered in conjunction with the Investment Funds Institute of Canada (IFIC).

CAREER OPPORTUNITIES

Personal banking officers • lending officers (retail and agricultural) • investment analysts • stockbrokers • customer service representatives

assiniboine.net/finance

INDIGENOUS FINANCIAL MANAGEMENT EIGHT-MONTH ADVANCED DIPLOMA

Expand on your financial management knowledge with a focus on working with Indigenous groups. Work towards your Certified Aboriginal Financial Manager (CAFM) designation.

CAREER OPPORTUNITIES

Accounting firms • banks • credit unions • Indigenous communities and organizations • government • non-profit organizations • consulting firms

assiniboine.net/ifm

HUMAN RESOURCE MANAGEMENT EIGHT-MONTH ADVANCED DIPLOMA

This program will prepare you for working in a human resources department in public or private industry. Learn about staffing, employment law, labour relations and more. This course will start you on your path to earn the Chartered Professional in Human Resources (CPHR) designation.

CAREER OPPORTUNITIES

Staffing • training and development • labour relations • compensation management and collective bargaining • industrial, commercial and government organizations

assiniboine.net/hrmanagement

MARKETING EIGHT-MONTH ADVANCED DIPLOMA

Hone your knowledge and skills as a marketing professional. Learn about marketing research, marketing strategy and analysis, consumer behaviour and marketing communications in local and international contexts.

CAREER OPPORTUNITIES

Sales • advertising • promotion • publicity • sales management • marketing management • retail management • market analysis • market research • new venture development

assiniboine.net/marketing





FOOD & HOSPITALITY

CERTIFICATE AND DIPLOMA PROGRAMS

CULINARY ARTS TWO-YEAR DIPLOMA

Learn food preparation techniques, nutritional content and perfect the art of presentation skills in this fast-paced program. Receive valuable experience in planning, preparing and serving food in a full-service, upscale restaurant. Develop teamwork skills by working in our commercial-style kitchen and gain practical experience in the well-known Great Grey Owl Restaurant and at other popular events hosted by students.

CAREER OPPORTUNITIES

hotels • restaurants • resorts • institutional kitchens • catering companies

assiniboine.net/culinary

HOTEL AND RESTAURANT MANAGEMENT TWO-YEAR DIPLOMA

Work alongside Culinary Arts students to host public events on campus. You have the opportunity to visit world-class vineyards to study viniculture, meet celebrity chefs and network with top industry professionals. Study fine wines, beers and liquors of the world by researching, sampling and serving them. Participate in paid work placements in exciting locales, such as the Niagara wine region or Banff.

CAREER OPPORTUNITIES

Food and beverage services • convention services • front office administration • housekeeping • reservation clerk • restaurant, banquet and catering management • human resources • new venture development • event coordinating

assiniboine.net/hotel



HEALTH

CERTIFICATE AND DIPLOMA PROGRAMS

COMPREHENSIVE HEALTH CARE AIDE SIX-MONTH CERTIFICATE

Hands-on learning opportunities in lab settings and practicum placements prepare you for this physically and mentally demanding—yet highly rewarding—career. Acquire industry best practices that employers in the health care field are looking for. Develop a broad range of skills that offers you the opportunity to return to your home community to start a career, if you so choose.

CAREER OPPORTUNITIES

Acute and extended-care facilities • personal care homes • private care facilities • mental health and community health settings • home care • private industry

assiniboine.net/chca

PRACTICAL NURSING TWO-YEAR DIPLOMA

Become part of a health care team that works with clients and their families in a various settings. Hands-on practical skills are taught in modern labs and also applied in acute and extended-care health facilities, personal care homes, community agencies and private homes during your clinical placements.

CAREER OPPORTUNITIES

Hospitals • personal care homes • medical clinics • private agencies • community health programs • postgraduate educational opportunities for nurses in dialysis, operating rooms, oncology, palliative care, foot care clinics, management and intensive care units

assiniboine.net/nursing



HUMAN SERVICES

CERTIFICATE AND DIPLOMA PROGRAMS

EARLY CHILDHOOD EDUCATION TWO-YEAR DIPLOMA

Refine your critical thinking, develop research and writing skills, and learn the theory and history of early childhood education in this play-based program. Enhanced learning experiences include collaborating with community partners on projects, industry field trips, guest speakers and four practicum placements.

CAREER OPPORTUNITIES

Early learning centres • elementary and nursery school divisions • nursery schools • privately run, in-home childcare centres • child and family service facilities

assiniboine.net/ece

EDUCATION ASSISTANT FOUR-MONTH CERTIFICATE

Develop confidence and skills to work in classrooms, special education or life skills programs. The practicum component presents networking opportunities with potential employers, while also providing you with valuable work experience prior to graduation.

CAREER OPPORTUNITIES

Elementary, middle years and high schools • direct aides for students with special needs • social service agency youth workers • private aides for children requiring additional assistance

assiniboine.net/ea

PUBLIC SAFETY

EIGHT-MONTH CERTIFICATE

Jump start your career in law enforcement with this intensive eight-month program. Learn all aspects of public safety, including the criminal code of Canada, conflict management, interviewing and investigating. To be successful, you must be able to balance academic studies, physical training and participate in team activities.

CAREER OPPORTUNITIES

Security companies • theft prevention • correctional facilities • Canada Border Services Agency • sheriff's office • municipal, regional, provincial or Indigenous police services

assiniboine.net/publicsafety

SOCIAL SERVICE WORKER TWO-YEAR DIPLOMA

Gain practical skills and knowledge in counselling and interviewing, professional communication and proposal writing while also learning more about Indigenous culture through hands-on activities and field trips. Receive additional training certificates in non-violent crisis intervention, applied suicide skills intervention training, mental health first aid and LGBTTQ awareness.

CAREER OPPORTUNITIES

Paraprofessionals • probations • child and family service agencies • addictions • mental health • schools • community group homes • food banks • resource centres

assiniboine.net/ssw

ADVANCED DIPLOMAS

Requires a previous diploma or degree.

EARLY CHILDHOOD PROGRAM MANAGEMENT

DISTANCE DELIVERY; FLEXIBLE START

It is essential to be able to lead, manage and administer early learning and childcare centres when you're looking to advance in your field. This program gives you the skills you need to take on the role and responsibility of a director. You can study at your own pace and continue to work while taking this program by distance education.

CAREER OPPORTUNITIES

This program helps students meet government standards for training at the ECE III level and is designed to help early childhood educators advance to leadership positions within the field. Director positions are available in a variety of early learning childcare settings.

assiniboine.net/ecpm

PUBLIC SAFETY

EIGHT-MONTH ADVANCED DIPLOMA

Leverage your previous post-secondary credential and receive an advanced diploma upon completion of this program. Learn all aspects of public safety, including the criminal code of Canada, conflict management, interviewing and investigating. To be successful, you must be able to balance academic studies, physical training and participate in team activities.

CAREER OPPORTUNITIES

Municipal, regional, provincial or Indigenous police services • Canada Border Services Agency • sheriff's office • correctional facilities

assiniboine.net/publicsafetyadvanced





TECHNOLOGY

CERTIFICATE AND DIPLOMA PROGRAMS

CIVIL TECHNICIAN ONE-YEAR CERTIFICATE

Develop your problem-solving skills through drafting, surveying and computer-aided design; build a solid foundation of basic civil engineering skills using Computer Assisted Drafting (CAD). Learn to design different areas of infrastructure including roads, sidewalks, watersheds and drainage systems. Acquire skills in third angle project standards, 3D modelling and producing architectural drawings for a residential project. Upon graduation, go directly into the workforce or transfer to civil engineering programs across Manitoba.

CAREER OPPORTUNITIES

Engineering and architectural firms • manufacturers • construction and development companies • inspection testing agencies • material suppliers • departments within government

assiniboine.net/civiltechnician

COMMUNICATIONS ENGINEERING TECHNOLOGY TWO-YEAR DIPLOMA

Take your interest in technology to the next level. Design, manufacture and install the most up-to-date communications systems that keep us linked together. Become a technologist who is responsible for equipment and systems that impact all aspects of communication. Be a part of this ever-changing industry and work with cutting-edge technology while receiving top-level wages.

CAREER OPPORTUNITIES

Computer-aided design • remote control technology • wireless and fiber optics • imbedded programming • electronic design and repair • computer programming • network design • communication systems installation • project management

assiniboine.net/cet

DIGITAL ART AND DESIGN TWO-YEAR DIPLOMA

Explore new and innovative ways to merge form and function, creating designs that broaden the mind. Study composition and layout, typography, digital painting and drawing software. Learn to communicate in today's ever-changing digital world, dip into marketing and branding, and put your skills to the test while working on visual solutions for real-world clients.

CAREER OPPORTUNITIES

Design firms • advertising agencies • game development studios • in-house creative departments • entrepreneurs • freelance

assiniboine.net/digitaldesign

MEDIA AND COMMUNICATIONS TWO-YEAR DIPLOMA

Craft powerful messages through audio or visual productions. Produce a live news broadcast, run Assiniboine's own CJ-106 FM radio station and learn how to tell compelling stories that reflect the world around us. Get a solid foundation in film, television, multi-platform journalism and radio production that you can build on.

CAREER OPPORTUNITIES

Media production houses • news outlets • film companies • radio stations • in-house production teams of large companies • audio-visual companies • live event venues • entrepreneurs • freelance

assiniboine.net/mediacommunications

NETWORK ADMINISTRATION TECHNOLOGY TWO-YEAR DIPLOMA

Study in cutting-edge electronic and computer lab facilities. Learn to analyze, troubleshoot, repair, install and provide technical support for computer systems and networks. Acquire the skills to be able to manage network routers, install and upgrade hardware and software, and develop internet applications. You have the option to write industry-standard certifications such as A+, Linux+, Network+, MCTS, MCITP, CCNA and CCENT.

CAREER OPPORTUNITIES

Installing, troubleshooting and supporting data • wireless and voice networks • installing and upgrading computer hardware • installing and supporting computer software • internet development (including web server support)

assiniboine.net/nat

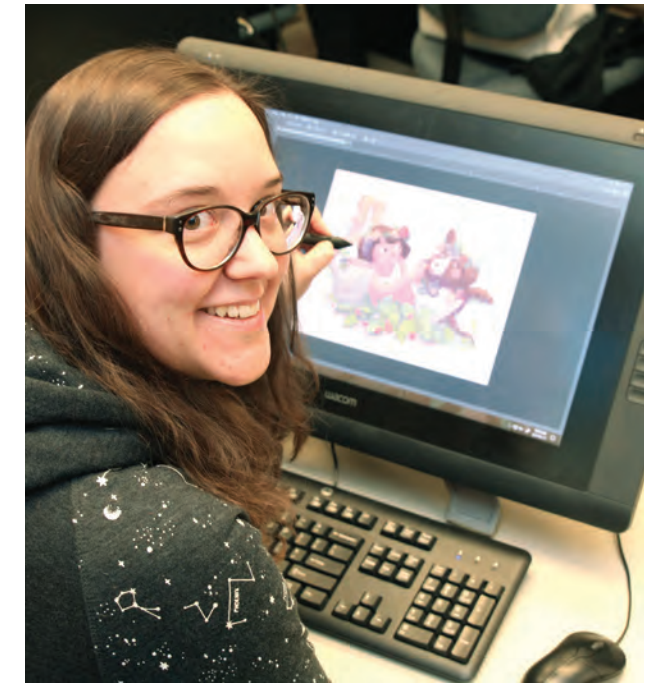
WEB AND INTERACTIVE DEVELOPMENT TWO-YEAR DIPLOMA

Study emerging visual technologies that extend, replace and enhance our realities (virtual, augmented and mixed reality applications). Learn the fundamentals of programming, both the back-end and front-end development of websites, as well as mobile app development. Create and customize the delivery of web content on desktop computers and mobile platforms.

CAREER OPPORTUNITIES

Web development companies • online marketing agencies • large or small game development studios • educational software companies • entrepreneurs • freelance

assiniboine.net/interactivedevelopment





TRADES

CERTIFICATE AND DIPLOMA PROGRAMS

APPLIED BUILDING CONSTRUCTION SIX-MONTH CERTIFICATE

Develop the practical skills you need to create excellent work in this Parkland campus based program. Learn about hand tools, precise measuring and cutting, concrete pouring, and construction safety.

CAREER OPPORTUNITIES

Commercial and residential construction • materials merchandising • prefabrication centres • cabinet making facilities building or woodworking fields

assiniboine.net/appliedbuilding

AUTOMOTIVE TECHNICIAN NINE-MONTH CERTIFICATE

Take your ability to problem solve and turn it into a career in the automotive service industry. Develop basic shop skills as you learn about electrical systems, engines and power trains. Repair and service cars and light-duty trucks. Gain industry-based knowledge in a hands-on environment where you will work on live equipment while building your confidence in customer service.

CAREER OPPORTUNITIES

Dealerships • repair shops • sales • automotive component parts

assiniboine.net/automotive

CARPENTRY AND WOODWORKING NINE-MONTH CERTIFICATE

Learn all the basics of building a single dwelling house. Acquire skills in stair building, cabinet making and finishing and concrete pouring, while completing training in safety and scaffolding. Make industry connections and become career-ready with the practicum at the end of this program.

CAREER OPPORTUNITIES

Residential and commercial construction • cabinet making • facilities • other building fields

assiniboine.net/carpentry

CONSTRUCTION ELECTRICIAN NINE-MONTH CERTIFICATE

Gain the confidence you need in order to become a Level 1 apprentice. Find exceptional learning experiences in our modern electrical shop and acquire advanced skills in wiring and blueprint reading. Gain real industry experience and be career-ready after completing the practicum at the end of this program.

CAREER OPPORTUNITIES

Electrical contractors • construction companies • maintenance departments of industrial companies • public utilities • wholesale supply houses • your own business

assiniboine.net/ce

HEAVY EQUIPMENT TECHNICIAN/ AGRICULTURAL EQUIPMENT TECHNICIAN/ TRUCK AND TRANSPORT MECHANIC NINE-MONTH CERTIFICATE

Develop your skills in servicing, diagnosing and repairing of agricultural, heavy duty and transport equipment. Hands-on experiences include class time in a modern shop where you will work on live equipment.

This program, which includes a practicum, offers you the opportunity to receive credit towards Level 1 in one of three trades. Upon completion, choose between Heavy Duty Equipment Technician, Agricultural Equipment Technician, or the Truck and Transport Mechanic apprenticeship program.

CAREER OPPORTUNITIES

Technician or service writer in construction • heavy duty or agricultural companies • component parts

assiniboine.net/heavyequip

assiniboine.net/agtech

assiniboine.net/transportmech

INDUSTRIAL METALS FABRICATION 11-MONTH CERTIFICATE

This pre-employment program offers you the opportunity to explore two trades. The machining specialization prepares you to work on band saws, lathes, milling machines and drill presses while exploring up and coming technology with industry-specific software and 3D printers. The welding and fabrication specialization introduces you to oxyacetylene welding, shielded metal arc welding, gas metal arc welding, gas tungsten arc welding and plasma cutting. Gain additional training on hoisting, lifting, rigging and handling materials with cranes.

CAREER OPPORTUNITIES

Machining opportunities: machine shops rail companies • manufacturing Welding opportunities: heavy machinery manufacturers • metal fabrication shops • transport • welding companies

assiniboine.net/imf

PIPING TRADES NINE-MONTH CERTIFICATE

Acquire knowledge in more than just plumbing with this well-rounded pre-employment program. Develop your skills in blueprint reading, plumbing systems, heating, refrigeration, sheet metal and water treatment. Learn in a modern shop with up-to-date equipment. Your three-week practicum allows you the opportunity to gain industry experience before you graduate.

CAREER OPPORTUNITIES

Residential and commercial plumbing • steam fitting • water treatment plants • heating • gas fitting • refrigeration • welding

assiniboine.net/piping

POWER ENGINEERING TWO-YEAR DIPLOMA

Certification in 4th class power engineering provides opportunities for advancement in industry. Spend time in the classroom, as well as in industry gaining steam time and work experience. Exceptional learning experiences include rebuilding and tearing down pumps, pipe threading and an introduction to welding and electrical components.

CAREER OPPORTUNITIES

Water treatment plants • hospitals • government agencies • school divisions • production plants • building complexes

assiniboine.net/powerengineering

WELDER FOUR-MONTH CERTIFICATE

Gain the skills needed for high-quality welding work. This comprehensive four-month program focuses on the safety, theory and practical aspects of oxyacetylene, shielded arc welding, gas tungsten arc welding and special processes. A three-week work practicum and general fabrication training are included in this hands-on program. Train in all aspects of welding, so you can be job ready.

CAREER OPPORTUNITIES

Manufacturing • construction • agriculture • oil

assiniboine.net/welder



PROGRAM FEES

FOR CERTIFICATES, DIPLOMAS AND ADVANCED DIPLOMAS

The following pricing is for domestic students; international students, please visit each program page for international program pricing.

PROGRAMS	TUITION		COURSE FEES		STUDENTS' ASSOCIATION FEES (INCLUDING HEALTH COVERAGE)		ESTIMATED TEXTBOOK, TOOLS AND SUPPLIES		PROGRAM ACTIVITIES (OPTIONAL)
CERTIFICATE AND DIPLOMA PROGRAMS									
Agribusiness	Yr 1: \$4,020	Yr 2: \$3,090	Yr 1: \$1,090	Yr 2: \$940	Yr 1: \$490	Yr 2: \$440	Yr 1: \$790	Yr 2: \$280	
Applied Building Construction	\$2,210		\$1,130		\$370		\$1,840		
Automotive Technician	\$3,550		\$1,350		\$470		\$4,830		
Business Administration									
Accounting	Yr 1: \$3,090	Yr 2: \$3,090	Yr 1: \$820	Yr 2: \$820	Yr 1: \$440	Yr 2: \$440	Yr 1: \$970	Yr 2: \$1,230	
Financial Services	Yr 1: \$3,090	Yr 2: \$3,090	Yr 1: \$820	Yr 2: \$570	Yr 1: \$440	Yr 2: \$440	Yr 1: \$980	Yr 2: \$2,510	
Human Resource Management	Yr 1: \$3,090	Yr 2: \$3,090	Yr 1: \$820	Yr 2: \$630	Yr 1: \$440	Yr 2: \$440	Yr 1: \$980	Yr 2: \$1,060	
Marketing Marketing	Yr 1: \$3,090	Yr 2: \$3,090	Yr 1: \$820	Yr 2: \$630	Yr 1: \$440	Yr 2: \$440	Yr 1: \$980	Yr 2: \$1,390	
Carpentry and Woodworking	\$4,090		\$2,140		\$510		\$2,360		
Civil Technician	\$4,550		\$1,650		\$540		\$1,350		
Communications Engineering Technology	Yr 1: \$3,700	Yr 2: \$3,700	Yr 1: \$2,590	Yr 2: \$2,890	Yr 1: \$480	Yr 2: \$480	Yr 1: 1,430	Yr 2: \$1,340	
Comprehensive Health Care Aide	\$1,700		\$520		\$350		\$1,480		
Construction Electrician	\$3,500		\$1,240		\$470		\$1,620		
Culinary Arts	Yr 1: \$3,750	Yr 2: \$3,550	Yr 1: \$1,890	Yr 2: \$2,010	Yr 1: \$460	Yr 2: \$470	Yr 1: \$1,250	Yr 2: \$400	
Digital Art and Design	Yr 1: \$3,090	Yr 2: \$3,140	Yr 1: \$1,060	Yr 2: \$1,530	Yr 1: \$440	Yr 2: \$450	Yr 1: \$4,390	Yr 2: \$480	
Early Childhood Education	Yr 1: \$3,800	Yr 2: \$3,190	Yr 1: \$800	Yr 2: \$620	Yr 1: \$490	Yr 2: \$450	Yr 1: \$1,270	Yr 2: \$420	
Education Assistant	\$1,650		\$350		\$350		\$1,060		
Heavy Equipment Technician	\$4,010		\$1,490		\$500		\$3,520		
Horticultural Production	\$3,400		\$1,200		\$450		\$490		
Hotel and Restaurant Management	Yr 1: \$4,520	Yr 2: \$2,780	Yr 1: \$1,520	Yr 2: \$880	Yr 1: \$510	Yr 2: \$420	Yr 1: \$1,230	Yr 2: \$1,100	
Industrial Metals Fabrication									
Full Program	\$4,590		\$2,550		\$540		\$1,890		\$480
(Machining Specialization)	\$2,780		\$1,280		\$420		\$1,020		
(Welding & Fabrication Specialization)	\$2,050		\$1,290		\$380		\$1,210		\$480

PROGRAMS	TUITION		COURSE FEES		STUDENTS' ASSOCIATION FEES (INCLUDING HEALTH COVERAGE)		ESTIMATED TEXTBOOK, TOOLS AND SUPPLIES		PROGRAM ACTIVITIES (OPTIONAL)
Land and Water Management	Yr 1: \$4,020	Yr 2: \$3,090	Yr 1: \$1,380	Yr 2: \$1,710	Yr 1: 490	Yr 2: 440	Yr 1: \$1,310	Yr 2: \$250	
Legal Administration	Yr 1: \$3,090	Yr 2: \$3,090	Yr 1: \$950	Yr 2: \$520	Yr 1: \$440	Yr 2: \$440	Yr1 : \$1,350	Yr 2: \$220	
Media and Communications	Yr 1: \$3,090	Yr 2: \$3,140	Yr 1: \$1,540	Yr 2: \$1,600	Yr 1: \$440	Yr 2: \$450	Yr 1: \$4,360	Yr 2: \$350	
Medical Administration	Yr 1: \$3,090	Yr 2: \$3,090	Yr 1: 950	Yr 2: \$710	Yr 1: \$440	Yr 2: \$440	Yr 1: \$1,350	Yr 2: \$670	
Network Administration Technology	Yr 1: \$3,090	Yr 2: \$3,140	Yr 1: \$1,650	Yr 2: 1,770	Yr 1: \$440	Yr 2: \$450	Yr 1: \$230	Yr 2: \$0	
Office Management	Yr 1: \$3,090	Yr 2: \$3,090	Yr 1: \$950	Yr 2: \$710	Yr 1: \$440	Yr 2: \$440	Yr 1: \$1,350	Yr 2: \$650	
Office Skills	\$3,090		\$950		\$440		\$1,350		
Piping Trades	\$3,700		\$1,920		\$480		\$1,470		
Public Safety (Certificate Program)	\$3,090		\$700		\$440		\$2,100		
Power Engineering	Yr 1: \$3,390	Yr 2: \$3,390	Yr 1: \$1,490	Yr 2: \$1,580	Yr 1: \$460	Yr 2: \$460	Yr 1: \$3,190	Yr 2: \$1,930	
Practical Nursing (Year 1 - January Intake)	\$2,110		\$800		\$380		\$3,590		
(Year 1 - September Intake)	\$3,030		\$1,140		\$440		\$4,530		
(Year 2 - January Intake)	\$3,340		\$950		\$460		\$2,440		
(Year 2 - September Intake)	\$2,420		\$620		\$400		\$1,500		
Social Service Worker	Yr 1: \$3,450	Yr 2: \$3,500	Yr 1: \$640	Yr 2: \$710	Yr 1: \$470	Yr 2: \$470	Yr 1: \$1,800	Yr 2: \$1,890	
Web and Interactive Development	Yr 1: \$3,090	Yr 2: \$3,140	Yr 1: \$1,120	Yr 2: \$1,600	Yr 1: \$440	Yr 2: \$450	Yr 1: \$4,390	Yr 2: \$480	
ADVANCED DIPLOMA PROGRAMS									
Accounting	\$3,090		\$760		\$440		\$1,950		
Agriculture	Check website for more details								
Early Childhood Management	Check website for more details								
Finance	\$3,090		\$630		\$440		\$2,570		
Geographic Information Systems	\$3,090		\$1,770		\$440		\$540		
Human Resource Management	\$3,090		\$700		\$440		\$1,300		
Indigenous Financial Management	\$3,090		\$760		\$440		\$1,330		
Marketing	\$3,090		\$630		\$440		\$1,520		
Public Safety	\$3,090		\$700		\$440		\$2,100		
Sustainable Food Systems	\$3,400		\$1,140		\$450		\$490		

Note: The information listed in this table is subject to change; check each program’s webpage for the for the most up-to-date information.

DISTANCE EDUCATION

Why study by distance? Distance education increases access and flexibility for students. Continue to work full- or part-time, parent and participate in community activities, all while working towards a college certificate or diploma.

Our virtual learning environments are open 24-7 and 365 days a year, meaning you decide when and where you want to study. Our dedicated instructors are available by phone, email and online to answer questions and provide feedback.

To learn more about what courses and programs are currently offered through distance education, visit assiniboine.net/distance.

APPRENTICESHIP

Train for your career as a certified journeyperson. Manitoba has more than 55 designated apprenticeship trades and Assiniboine is proud to partner with Apprenticeship Manitoba to offer many of them. You'll learn through a combination of on-the-job practical training and in-school technical training.

Training for a certified journeyperson varies from two to five levels, depending on the trade. For each level, you spend about 80% of your time learning from your employer; the other 20% is short-term technical training at college. Choosing a trade program will take you on a career path that promises to be both rewarding and challenging. So, roll up your sleeves, and let's get to work.

» Agricultural Equipment Technician
» Automotive Service Technician
» Carpenter
» Construction Electrician

» Gasfitter "B"
» Heavy Duty Equipment Technician
» Industrial Electrician
» Plumber

» Pork Production Technician
» Power Electrician
» Welder

For more information, contact Apprenticeship Manitoba at manitoba.ca/tradecareers.

EXPERIENCE ACC

Discover Assiniboine with this one-stop shop! Visit assiniboine.net/experienceACC.

REGISTER FOR INFO SESSIONS

Curious about college? Explore your options! Our free information sessions give you an overview about the program you're interested in. Chat with faculty, ask questions and get to know Assiniboine!

ORDER CUSTOM EXPLORATION PACKAGES

Interested in more than one program at Assiniboine or looking for hard copies of all our publications? Fill out our online form, and we'll send you a customized mailing full of helpful information. Plus, we'll send you a free gift—just a little thanks from us to you for taking the time to connect!

TAKE VIRTUAL CAMPUS TOURS

See what our campuses have to offer. Assiniboine's virtual tours give you an inside glimpse into shops, classrooms, and all of the spaces and places that make our campuses unique!

...and so much more!



START YOUR ASSINIBOINE JOURNEY HERE

Step 1

CHOOSE YOUR PROGRAM.

- » Research our programs and admission requirements at assiniboine.net/programs and take our **Me@ACC** career quiz at assiniboine.net/careerquiz. If you are unsure if you meet admission requirements, contact admissions@assiniboine.net before you apply.
- » Attend an online program information session (assiniboine.net/infosession)
- » Still not sure which program to take? Contact our recruitment team at recruit@assiniboine.net or call 800.862.6307 ext 8750.

Step 2

APPLY TO YOUR PROGRAM.

Visit assiniboine.net/apply to get started on your online application. For most programs at Assiniboine (those that are not competitive entry), qualified applicants are admitted on a first-completed, first-served basis. We accept applications up to one year prior to the program start date.

You will need to submit the following (at minimum) to apply:

- » Online application
- » \$95 application fee
- » Official transcripts

Certain programs, such as our competitive entry programs, require additional documentation. Check out the admission requirements on your program's webpage for full details.

Step 3

BECOME A STUDENT.

- » We will connect with you when we receive your application. Applications are complete when all documentation is submitted.
- » If you meet admission requirements, and there is space in the program, you will be sent an acceptance letter.
- » A \$400 (domestic students only), non-refundable tuition deposit is due before the stated deadline.
- » If you have applied to a competitive entry program, your application will be assessed and successful applicants will be accepted.



WELCOME TO Assiniboine!

Keep an eye out for important emails and information from us, but rest assured, you've done your homework. Now, sit back and relax—we'll see you when classes start!

CAMPUSES

VICTORIA AVENUE EAST CAMPUS

1430 Victoria Avenue East
Brandon, MB R7A 2A9
Tel: 204.725.8700 | 800.862.6307
Fax: 204.725.8740

CENTRE FOR ADULT LEARNING

Brandon
1430 Victoria Avenue East
Brandon, MB R7A 2A9
Tel: 204.725.8735 | 866.726.1117
Fax: 204.725.8740

Dauphin
520 Whitmore Avenue East
P.O. Box 4000
Dauphin, MB R7N 2V5
Tel: 204.622.2222
Fax: 800.482.2933

NORTH HILL CAMPUS

1035 1st Street North
Brandon, MB R7A 2Y1
Fax: 204.725.8740

Manitoba Institute of Culinary Arts
Tel: 204.725.8741
800.862.6307 ext 6145

Len Evans Centre for Trades and Technology
Tel: 204.725.8715
800.862.6307 ext 6736

PARKLAND CAMPUS

520 Whitmore Avenue East
P.O. Box 4000
Dauphin, MB R7N 2V5
Tel: 204.622.2222
Fax: 800.482.2933

WINNIPEG CAMPUS

Unit 87 - 1313 Border Street
Winnipeg, MB R3H 0X4
Tel: 204.694.7111
Fax: 800.482.2933



FOR MORE INFORMATION
ON ATTENDING ASSINIBOINE :

E RECRUIT@ASSINIBOINE.NET

P 204.725.8750

TF 800.862.6307 EXT 8750

ASSINIBOINE.NET



ACCMB



ACCMANITOBA



@ACCMB



ACCMANITOBA



ACCMB

This publication is available in alternate English formats.
Please contact accessibility@assiniboine.net or 204.725.8700 (ext. 6052).

