



**RUSS EDWARDS
SCHOOL**
Agriculture & Environment

ELIGIBLE FOR
**FINANCIAL AID
& AWARDS**

AGRICULTURE

1-Year Advanced Diploma

This advanced program blends the business and technology of agriculture, equipping you for a career to address the current and expanding labour shortage in Manitoba and Western Canada's agriculture and agri-food sectors.

PROGRAM LEARNING OUTCOMES

- ▶ Integrate and apply various agricultural business skills to industry standards.
- ▶ Integrate and apply various field technical skills to industry standards.
- ▶ Develop specialized plans for the agribusiness sector that build off of prior industry and educational experiences. This could include commodity marketing plans, marketing and sales strategies, crop and livestock production plans, farm safety and environmental farm plans, agribusiness plans, soil management and soil fertility management plans, and succession and estate management plans.
- ▶ Apply agro-ecology and environmental land management practices to agricultural land use and landscapes.
- ▶ Evaluate and implement risk management strategies for agricultural operations.
- ▶ Evaluate and apply supply chain management principles in the agribusiness sector.
- ▶ Design cropping systems and apply effective practices in crop production systems in Western Canada, including integrated approaches.
- ▶ Develop integrated pest management systems and apply assessment techniques, field scouting procedures, and appropriate record keeping.

For a full list of program learning outcomes, visit assiniboine.net/agriculture

You might be a good fit for this program if you would enjoy:

- ▶ A one-year program that builds upon your previous education and introduces you to production terms and concepts applicable to Western Canadian agricultural practices.
- ▶ Entering a career in or supporting the Canadian agricultural industry and food production markets.
- ▶ The potential to work in a variety of urban and rural communities, in both indoor and outdoor settings.
- ▶ Collecting, organizing, and analyzing data to solve problems.
- ▶ Learning how agricultural producers and their support industries work together to produce the food that feeds the world.



Campus/Delivery Options
Victoria Avenue East campus



Available Intakes
September



Work Integrated Learning
16 weeks

EXPECTATIONS

Program & Industry

- ▶ Maintain strong customer and client relationships by quickly solving problems and dealing with customer conflicts and complaints in a professional manner.
- ▶ Possess a valid driver's license and access to a vehicle.
- ▶ Apply business practices to crop, livestock, or mixed farm operations.
- ▶ Manage product, price, placement, and promotion to sell to and meet customer needs.
- ▶ Be self-motivated and results-oriented with the ability to deliver strong results in an often-unsupervised environment.

CAREER OPPORTUNITIES

Grain companies • agriculture • agronomy • sales and service • finance • livestock • marketing • management • research • precision agriculture

ADMISSION REQUIREMENTS

- ▶ A two-year diploma or university degree

NEXT STEPS

Confidence in the career path you choose to embark on is key and selecting the right program for you is the first step. At Assiniboine, we offer an opportunity to explore and experience a program before applying. Choose to:

SPEND A DAY WITH US

Our Spend a Day program runs from November to March for most programs. When you spend a day at Assiniboine, we partner you with a current student in the program of your choice so you have the opportunity to:

- ▶ Participate in classroom activities
- ▶ Experience college life
- ▶ Explore all of our helpful services for students
- ▶ Meet current college students and instructors
- ▶ Enjoy a free lunch on us!

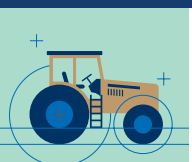
assiniboine.net/spendaday

ATTEND AN INFO SESSION

Join our free live online info sessions to get the inside scoop on your program of interest and life at Assiniboine. Register in advance and log in from home to learn about Assiniboine.

assiniboine.net/infosessions

Ready to Start?
APPLY NOW!



assiniboine.net/agriculture